

PARCEL LC-1

COURSE	BEARING	DISTANCE
1 - 2	NORTH	110.0'
2 - 3	EAST	130.2'
3 - 4	NORTH	200.0'
4 - 5	EAST	37.8'
5 - 6	NORTH	360.0'
6 - 7	EAST	75.0'
7 - 8	EAST	95.0'
8 - 9	S. 2° 59' W.	89.5'
9 - 10	S. 12° 01' E.	179.4'
10 - 11	S. 82° 30' W.	118.9'
11 - 12	SOUTH	389.4'
12 - 1	WEST	253.3'

PARCEL LC-2

COURSE	BEARING	DISTANCE
1 - 2	NORTH	114.5'
2 - 3	N. 82° 30' E.	118.4'
3 - 4	S. 12° 01' E.	213.9'
4 - 1	S. 82° 30' W.	163.3'

PARCEL LC-3

COURSE	BEARING	DISTANCE
1 - 2	NORTH	174.9'
2 - 3	N. 82° 30' E.	163.3'
3 - 4	S. 12° 01' E.	116.8'
4 - 5	S. 0° 31' E.	82.0'
5 - 1	WEST	186.9'

PARCEL LC-4

COURSE	BEARING	DISTANCE
1 - 2	WEST	75.0'
2 - 3	NORTH	110.0'
3 - 4	EAST	75.0'
4 - 1	SOUTH	110.0'

PARCEL LC-5

COURSE	BEARING	DISTANCE
1 - 2	WEST	105.0'
2 - 3	NORTH	110.0'
3 - 4	EAST	105.0'
4 - 1	SOUTH	110.0'

PARCEL LC-6

COURSE	BEARING	DISTANCE
1 - 2	WEST	145.5'
2 - 3	NORTH	110.0'
3 - 4	EAST	146.5'
4 - 1	SOUTH	110.0'

PARCEL LC-7

COURSE	BEARING	DISTANCE
1 - 2	WEST	100.0'
2 - 3	NORTH	110.0'
3 - 4	EAST	100.0'
4 - 1	SOUTH	110.0'

PARCEL LC-8

COURSE	BEARING	DISTANCE
1 - 2	WEST	66.0'
2 - 3	NORTH	110.0'
3 - 4	EAST	66.0'
4 - 1	SOUTH	110.0'

PARCEL LC-9

COURSE	BEARING	DISTANCE
1 - 2	WEST	66.0'
2 - 3	NORTH	110.0'
3 - 4	EAST	66.0'
4 - 1	SOUTH	110.0'

PARCEL LC-10

COURSE	BEARING	DISTANCE
1 - 2	WEST	66.0'
2 - 3	NORTH	110.0'
3 - 4	EAST	66.0'
4 - 1	SOUTH	110.0'

PARCEL LC-11

COURSE	BEARING	DISTANCE
1 - 2	WEST	66.0'
2 - 3	NORTH	110.0'
3 - 4	EAST	66.0'
4 - 1	SOUTH	110.0'

PARCEL LC-12

COURSE	BEARING	DISTANCE
1 - 2	WEST	55.5'
2 - 3	N. 72° 54' W.	73.1'
3 - 4	NORTH	116.4'
4 - 5	S. 72° 54' E.	92.3'
5 - 6	S. 89° 05' E.	36.6'
6 - 1	SOUTH	110.0'

PARCEL LC-13

COURSE	BEARING	DISTANCE
1 - 2	N. 73° 40' W.	438.0'
2 - 3	N. 17° 08' E.	5.8'
3 - 4	R. = 100'	ARC = 157.0'
4 - 5	N. 17° 08' E.	10.0'
5 - 6	S. 72° 54' E.	303.6'
6 - 1	SOUTH	116.4'

PARCEL LC-14

COURSE	BEARING	DISTANCE
1 - 2	WEST	55.0'
2 - 3	N. 24° 25' E.	61.6'
3 - 4	R. = 100'	ARC = 116.0'
4 - 5	S. 89° 04' E.	571.0'
5 - 6	N. 52° 13' E.	25.0'
6 - 7	S. 73° 40' E.	50.0'
7 - 8	S. 73° 40' E.	249.6'
8 - 9	SOUTH	941.4'
9 - 1	WEST	941.4'

PI 43+40.0
Δ = 11° 30' RT
R = 200'
L = 20.1'
PC 43+19.9
PT 43+60.0

PI 39+00.0
Δ = 16° 00' LT
R = 300'
L = 39.5'
PC 38+60.5
PT 39+39.0

PARCEL LC-15

COURSE	BEARING	DISTANCE
1 - 2	EAST	155.7'
2 - 3	EAST	55.0'
3 - 4	S. 24° 25' W.	149.1'
4 - 5	R. = 170'	ARC = 167.9'
5 - 6	S. 80° 58' W.	21.3'
6 - 7	NORTH	50.6'
7 - 1	NORTH	186.0'

PARCEL LC-16

COURSE	BEARING	DISTANCE
1 - 2	SOUTH	50.5'
2 - 3	S. 90° 58' W.	116.9'
3 - 4	R. = 100'	ARC = 59.6'
4 - 5	S. 46° 49' W.	27.7'
5 - 6	NORTH	67.4'
6 - 7	NORTH	60.6'
7 - 8	NORTHEASTERLY	84.0'
8 - 9	EAST	149.8'
9 - 1	SOUTH	45.0'

PARCEL LC-17

COURSE	BEARING	DISTANCE
1 - 2	NORTHEASTERLY	N.E. COR. OF PROPERTY
2 - 3	SOUTH	64.0'
3 - 4	SOUTH	53.1'
4 - 5	S. 46° 49' W.	156.0'
5 - 6	WEST	58.4'
6 - 1	WEST	66.0'

PARCEL LC-18

COURSE	BEARING	DISTANCE
1 - 2	EAST	66.0'
2 - 3	EAST	58.4'
3 - 4	S. 46° 49' W.	159.0'
4 - 5	S. 43° 11' E.	10.0'
5 - 6	S. 46° 49' W.	39.2'
6 - 7	R. = 150'	ARC = 80.0'
7 - 8	S. 23° 59' W.	313.2'
8 - 9	NORTH	123.0'
9 - 10	NORTH	111.0'
10 - 1	NORTHEASTERLY	TO POINT OF BEGINNING

PARCEL LC-19

COURSE	BEARING	DISTANCE
1 - 2	SOUTH	552.0'
2 - 3	WEST	469.0'
3 - 4	WEST	198.5'
4 - 5	NORTH	37.1'
5 - 6	N. 71° 17' E.	330.6'
6 - 7	N. 44° 33' E.	45.0'
7 - 8	N. 36° 11' E.	440.2'
8 - 9	N. 29° 59' E.	33.0'
9 - 10	N. 23° 58' E.	113.4'
10 - 1	SOUTH	110.8'

PARCEL LC-20

COURSE	BEARING	DISTANCE
1 - 12	EAST	82.9'
2 - 3	S. 52° 55' W.	179.4'
3 - 4	R. = 150'	ARC = 111.0'
4 - 5	N. 84° 41' W.	38.4'
5 - 6	NORTH	50.0'
6 - 7	NORTH	84.4'
7 - 1	EAST	198.5'

PARCEL LC-22

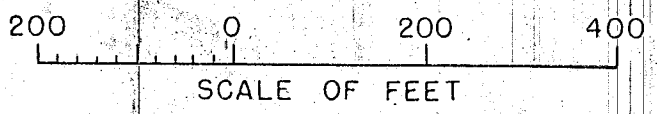
COURSE	BEARING	DISTANCE
1 - 2	SOUTH	58.2'
2 - 3	S. 59° 11' W.	95.7'
3 - 4	S. 88° 34' W.	446.5'
4 - 5	S. 0° 52' W.	45.4'
5 - 6	R. = 100'	ARC = 155.5'
6 - 7	N. 89° 58' W.	29.2'
7 - 8	NORTH	50.0'
8 - 9	NORTH	185.4'
9 - 10	N. 88° 34' E.	332.0'
10 - 11	N. 67° 33' E.	353.5'
11 - 1	SOUTH	116.4'

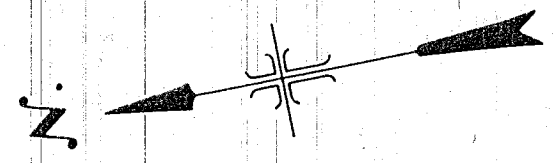
STATION	TO STATION	BEARING
STA. 37+98.0	TO PI 39+00.0	S. 2° 59' W.
PI 39+00.0	TO PI 43+40.0	S. 12° 01' E.
PI 43+40.0	TO PI 122+13.8 AH	S. 0331' E.
PI 122+13.8 AH	TO PI 132+80.2	N. 89° 05' W.
PI 132+80.2	TO PI 137+36.9	N. 72° 54' W.
PI 137+36.9	TO PI 138+58.2	S. 17° 07' W.
PI 138+58.2	TO PI 145+04.0	N. 89° 04' W.
PI 145+04.0	TO PI 147+59.0	S. 24° 25' W.
PI 147+59.0	TO PI 151+19.4	S. 80° 58' W.
PI 151+19.4	TO PI 155+75.3	S. 46° 49' W.
PI 155+75.3	TO PI 158+49.0	S. 23° 58' W.
PI 158+49.0	TO PI 165+41.1	S. 36° 11' W.
PI 165+41.1	TO PI 167+71.2	S. 52° 55' W.
PI 167+71.2	TO PI 170+04.1	S. 73° 32' W.
PI 170+04.1	TO PI 178+33.1	S. 59° 11' W.
PI 178+33.1	TO PI 183+21.8	S. 88° 34' W.
PI 183+21.8	TO PI 184+45.1	S. 0° 52' W.
PI 184+45.1	TO STA 185+02.8	N. 89° 58' W.

8-24-62 412 ~~REVISED~~ ALIGNMENT AND R.O.W. PARCELS LC-19, LC-21, LC-22
 11-3-61 412 ~~REVISED~~ DISTANCE, COURSE 10-11, PARCEL LC-17
 412 ~~REVISED~~ DISTANCE, COURSE 3-4, PARCEL LC-2
 8-28-61 412 ~~REVISED~~ DISTANCE, COURSE 10-11, PARCEL LC-17
 412 ~~REVISED~~ FROM 45.0 TO 28.0

UNITED STATES
 DEPARTMENT OF THE INTERIOR
 BUREAU OF RECLAMATION
WEBER BASIN PROJECT - UTAH
LAYTON CANAL
STA. 37 + 98.0 TO STA. 185 + 02.8
RIGHTS OF WAY MAP

DRAWN: M.E.M. SUBMITTED: *Walter J. [Signature]*
 TRACED: M.E.M. RECOMMENDED: *Ray S. [Signature]*
 CHECKED: *John [Signature]* APPROVED: *Clinton D. [Signature]*
 WEBER BASIN PROJECTS OFFICE OGDEN, UTAH
 SHEET 1 OF 13 SHEETS 5-19-61 526-412





PARCEL LC-23A

COURSE	BEARING	DISTANCE
1 - 2	SOUTH	55.0'
2 - 3	N.89°10'W	354.8'
3 - 4	S.69°45'W	110.3'
4 - 5	S.21°55'W	83.9'
5 - 6	S.3°52'W	97.5'
6 - 7	S.1°01'E	117.7'
7 - 8	S.20°35'E	160.4'
8 - 9	S.12°46'W	143.8'
9 - 10	WEST	51.3'
10 - 11	WEST	107.6'
11 - 12	N.12°51'E	134.4'
12 - 13	N.20°58'W	126.0'
13 - 14	N.3°52'E	371.4'
14 - 15	N.37°35'E	129.0'
15 - 16	S.89°58'E	340.0'
16 - 1	SOUTH	50.0'

PARCEL LC-23B

COURSE	BEARING	DISTANCE
1 - 2	EAST	51.3'
2 - 3	S.12°46'W	91.2'
3 - 4	R. + 250'	ARC = 176.2'
4 - 5	S.53°10'W	86.0'
5 - 6	R. + 150'	ARC = 117.1'
6 - 7	S.8°26'W	947.0'
7 - 8	WEST	115.7'
8 - 9	NORTHEASTERLY TO NORTH LINE OF NE 1/4 N.W. 1/4	80.5'
9 - 1	EAST	

PARCEL LC-25A

COURSE	BEARING	DISTANCE
1 - 2	EAST	92.0'
2 - 3	EAST	62.0'
3 - 4	S.36°00'W	214.6'
4 - 5	R. + 150'	ARC = 93.2'
5 - 6	NORTH	134.6'
6 - 1	NORTH	126.0'

PARCEL LC-27

COURSE	BEARING	DISTANCE
1 - 2	EAST	50.0'
2 - 3	SOUTH	447.0'
3 - 4	WEST	50.0'
4 - 1	NORTH	447.0'

PARCEL LC-26

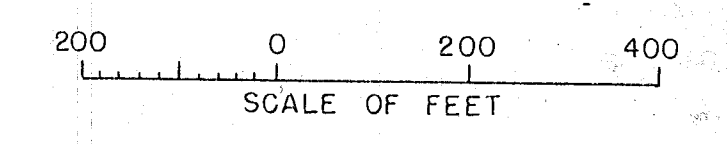
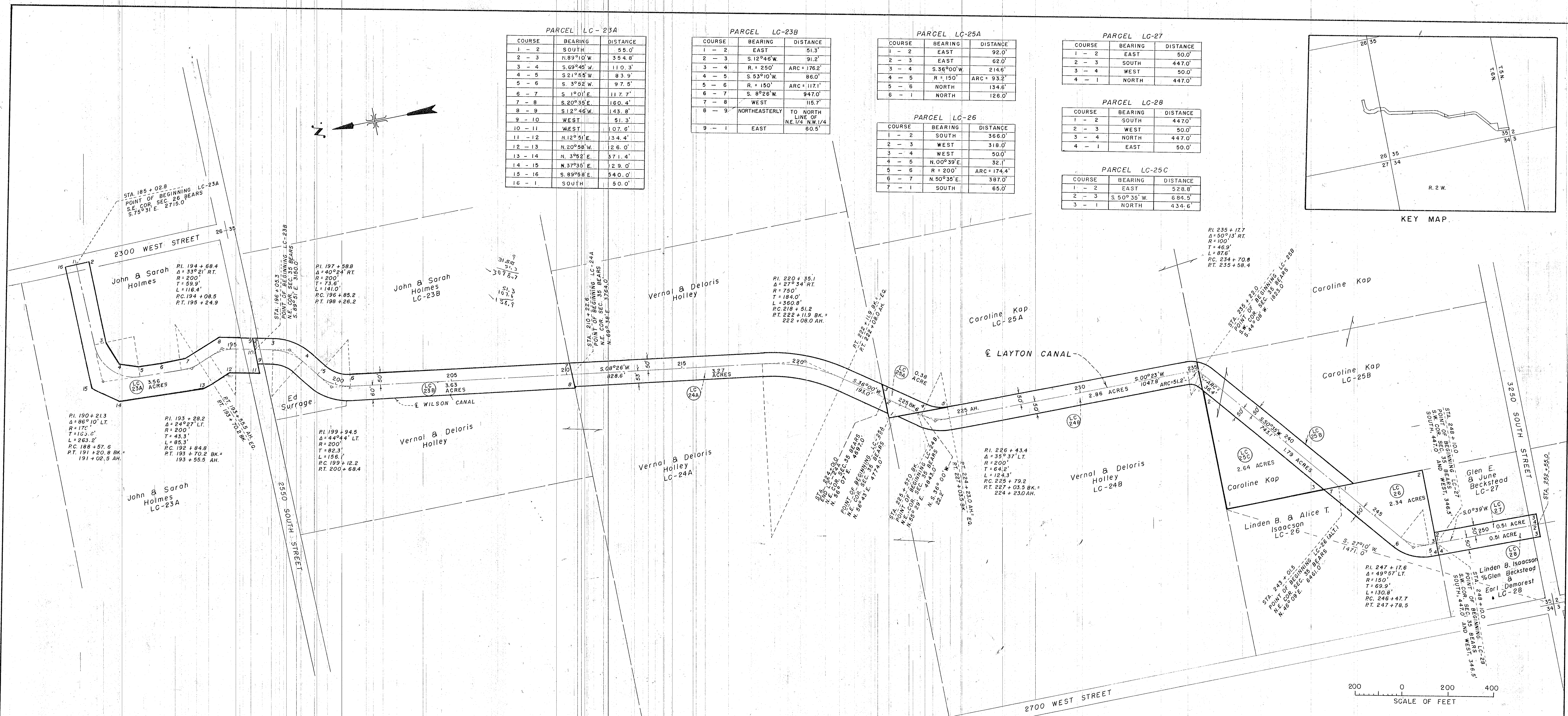
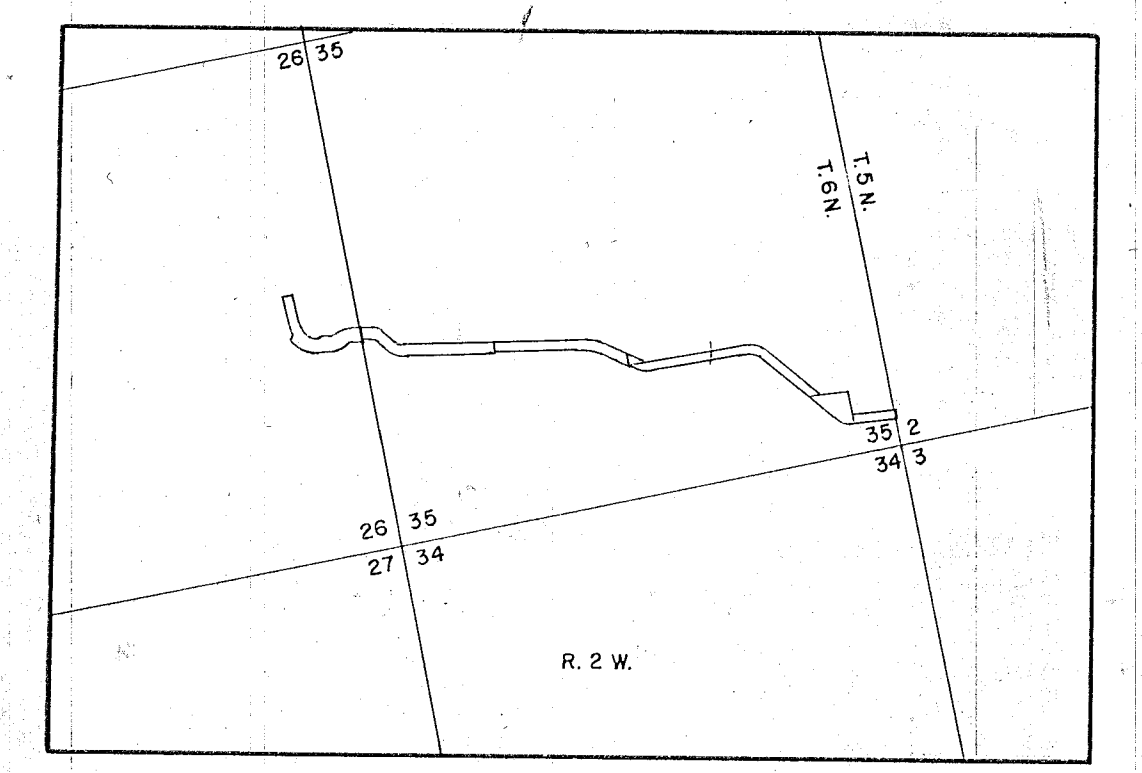
COURSE	BEARING	DISTANCE
1 - 2	SOUTH	366.0'
2 - 3	WEST	318.0'
3 - 4	WEST	500'
4 - 5	N.00°39'E	32.1'
5 - 6	R. + 200'	ARC = 174.4'
6 - 7	N.50°35'E	387.0'
7 - 1	SOUTH	65.0'

PARCEL LC-28

COURSE	BEARING	DISTANCE
1 - 2	SOUTH	447.0'
2 - 3	WEST	50.0'
3 - 4	NORTH	447.0'
4 - 1	EAST	50.0'

PARCEL LC-25C

COURSE	BEARING	DISTANCE
1 - 2	EAST	528.8'
2 - 3	S.50°35'W	684.5'
3 - 1	NORTH	434.6'

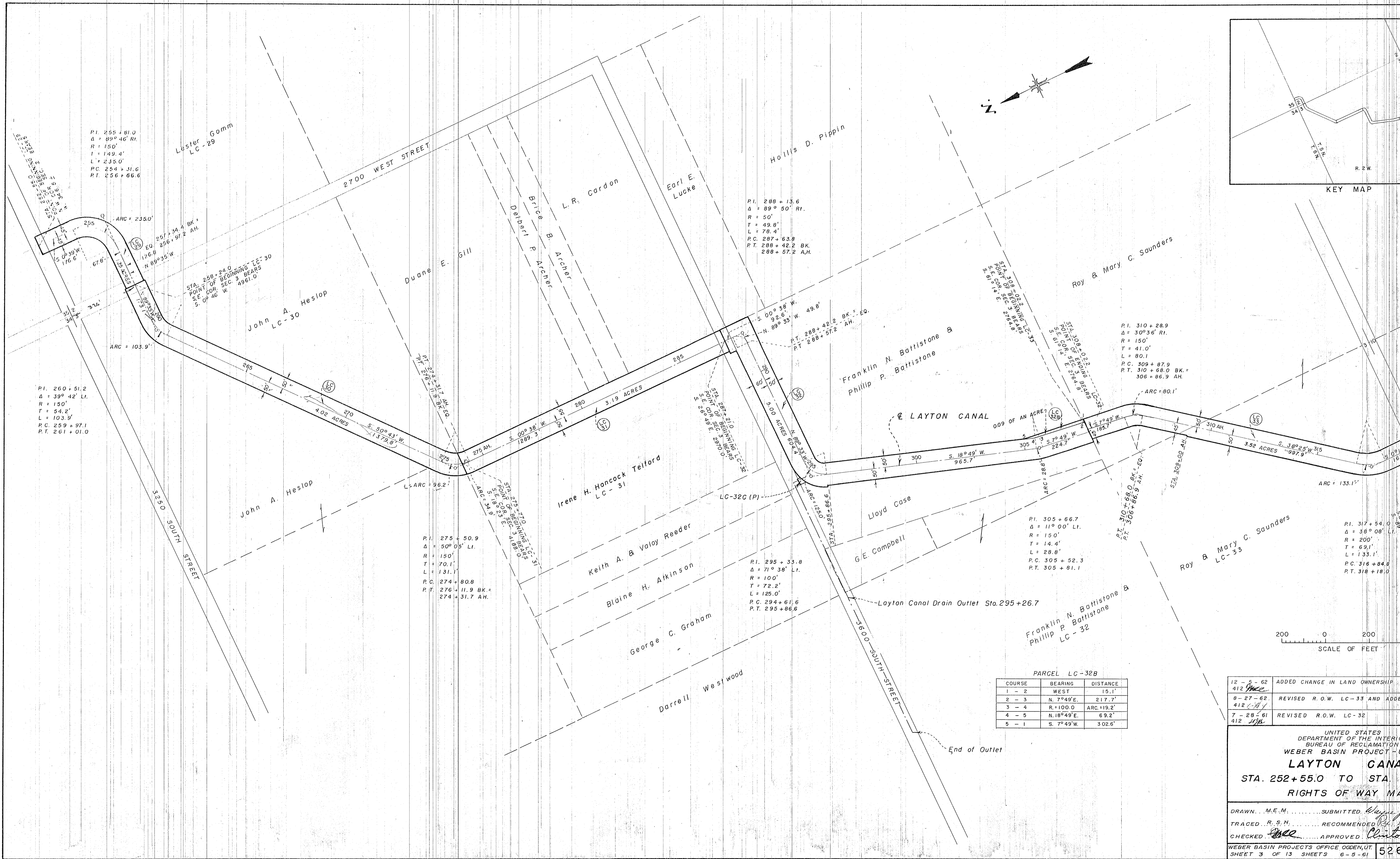


12-6-62	ADDED PARCEL LC-25C
412	<i>Handwritten initials</i>
8-24-62	REVISED PARCELS LC-24A, LC-24B
412	<i>Handwritten initials</i>
11-7-61	REVISED PARCEL LC-23A
412	<i>Handwritten initials</i>

UNITED STATES
 DEPARTMENT OF THE INTERIOR
 BUREAU OF RECLAMATION
 WEBER BASIN PROJECT - UTAH
LAYTON CANAL
 STA. 185+02.8 TO STA. 252+55.0
 RIGHTS OF WAY MAP

DRAWN... M.E.M. SUBMITTED... *Handwritten signature*
 TRACED... M.E.M. RECOMMENDED... *Handwritten signature*
 CHECKED... *Handwritten signature* APPROVED... *Handwritten signature*

WEBER BASIN PROJECTS OFFICE OGDEN, UT. SHEET 2 OF 13 SHEETS 6-5-61 **526-412-5242**



P.I. 255 + 81.0
 Δ = 89° 46' Rt.
 R = 150'
 T = 149.4'
 L = 235.0'
 P.C. 259 + 31.6
 P.T. 256 + 66.6

P.I. 260 + 51.2
 Δ = 39° 42' Lt.
 R = 150'
 T = 54.2'
 L = 103.9'
 P.C. 259 + 97.1
 P.T. 261 + 01.0

P.I. 275 + 50.9
 Δ = 50° 05' Lt.
 R = 150'
 T = 70.1'
 L = 131.1'
 P.C. 274 + 80.8
 P.T. 276 + 11.9 BK =
 274 + 31.7 AH.

P.I. 288 + 13.6
 Δ = 89° 50' Rt.
 R = 50'
 T = 49.8'
 L = 78.4'
 P.C. 287 + 63.8
 P.T. 288 + 42.2 BK =
 288 + 57.2 AH.

P.I. 305 + 66.7
 Δ = 11° 00' Lt.
 R = 150'
 T = 14.4'
 L = 28.8'
 P.C. 305 + 52.3
 P.T. 305 + 81.1

P.I. 310 + 28.9
 Δ = 30° 36' Rt.
 R = 150'
 T = 41.0'
 L = 80.1'
 P.C. 309 + 87.9
 P.T. 310 + 68.0 BK =
 306 + 86.9 AH.

P.I. 317 + 54.0
 Δ = 38° 08' Lt.
 R = 200'
 T = 69.1'
 L = 133.1'
 P.C. 316 + 84.8
 P.T. 318 + 18.0

PARCEL LC-32B

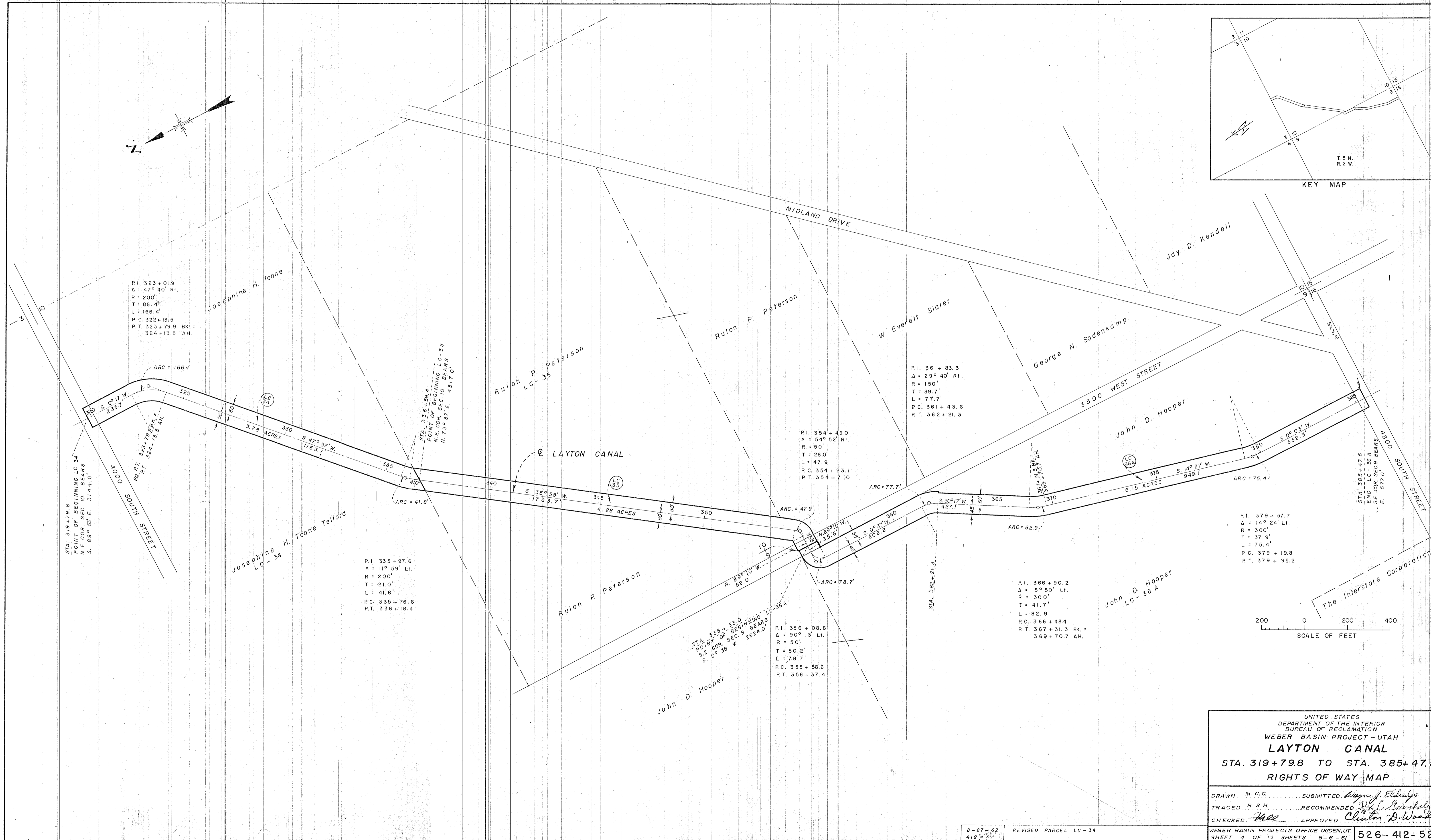
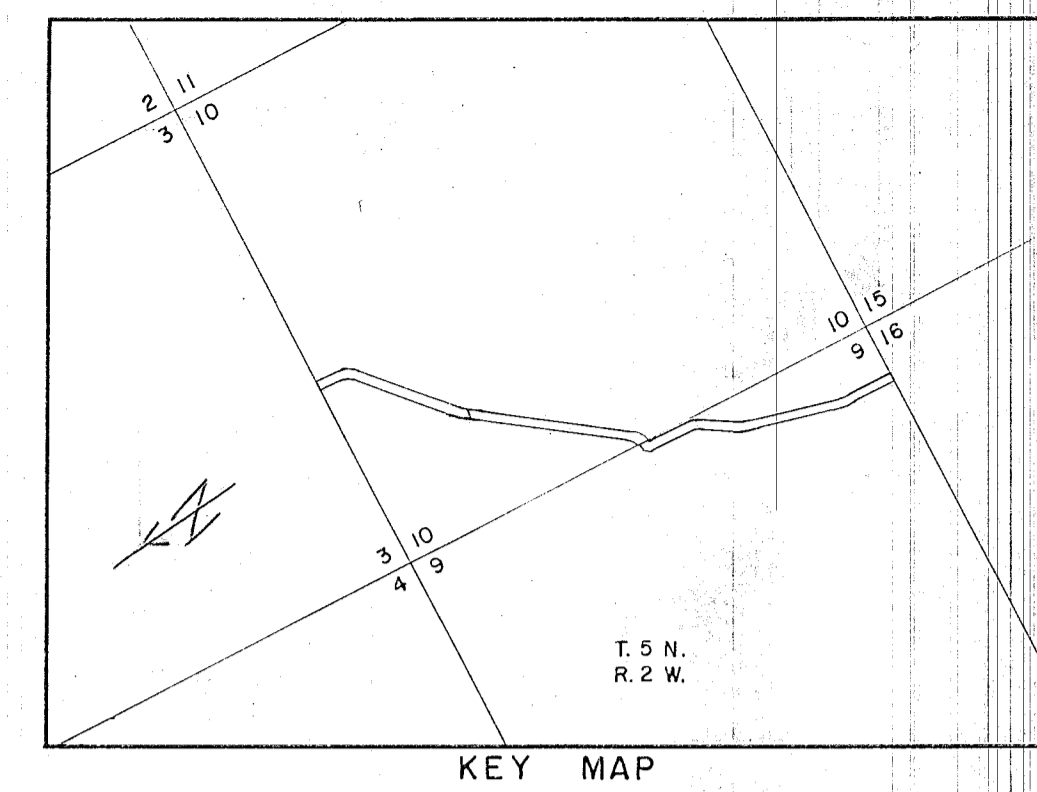
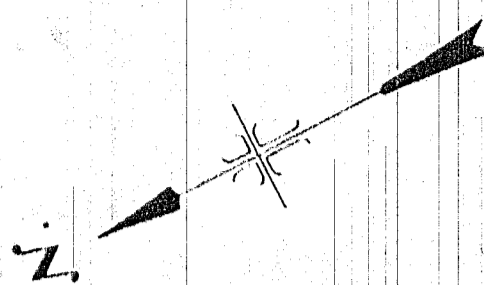
COURSE	BEARING	DISTANCE
1 - 2	WEST	15.1'
2 - 3	N. 7° 49' E.	217.7'
3 - 4	R. = 100.0	ARC = 19.2'
4 - 5	N. 18° 49' E.	69.2'
5 - 1	S. 7° 49' W.	302.6'

200 0 200
 SCALE OF FEET

12 - 5 - 62	ADDED CHANGE IN LAND OWNERSHIP
412 <i>W</i>	
8 - 27 - 62	REVISED R.O.W. LC-33 AND ADDED
412 <i>W</i>	
7 - 28 - 61	REVISED R.O.W. LC-32
412 <i>W</i>	

UNITED STATES
 DEPARTMENT OF THE INTERIOR
 BUREAU OF RECLAMATION
 WEBER BASIN PROJECT - U
LAYTON CANAL
 STA. 252+55.0 TO STA.
 RIGHTS OF WAY MA

DRAWN... M.E.M. SUBMITTED...
 TRACED... R.S.M. RECOMMENDED...
 CHECKED... APPROVED...
 WEBER BASIN PROJECTS OFFICE OGDEN, UT.
 SHEET 3 OF 13 SHEETS 6-5-61



P.I. 323 + 01.9
 Δ = 47° 40' Rt.
 R = 200'
 T = 88.4'
 L = 166.4'
 P.C. 322 + 13.5
 P.T. 323 + 79.9 BK. =
 324 + 13.5 AH.

STA. 319 + 79.8
 POINT OF BEGINNING LC-34
 N.E. COR. SEC. 10 BEARS
 S. 89° 55' E. 314.0

STA. 336 + 59.4
 POINT OF BEGINNING LC-35
 N.E. COR. SEC. 10 BEARS
 N. 73° 37' E. 437.0

P.I. 335 + 97.6
 Δ = 11° 59' Lt.
 R = 200'
 T = 21.0'
 L = 41.8'
 P.C. 335 + 76.6
 P.T. 336 + 18.4

STA. 355 + 23.0
 POINT OF BEGINNING LC-36A
 S.E. COR. SEC. 9 BEARS
 S. 0° 38' W. 2624.0

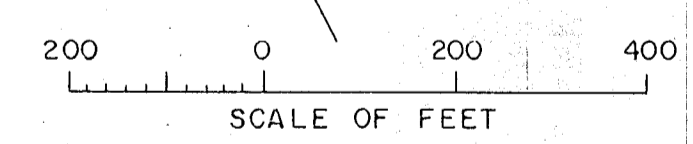
P.I. 356 + 08.8
 Δ = 90° 13' Lt.
 R = 50'
 T = 50.2'
 L = 78.7'
 P.C. 355 + 58.6
 P.T. 356 + 37.4

P.I. 361 + 83.3
 Δ = 29° 40' Rt.
 R = 150'
 T = 39.7'
 L = 77.7'
 P.C. 361 + 43.6
 P.T. 362 + 21.3

P.I. 354 + 49.0
 Δ = 54° 52' Rt.
 R = 50'
 T = 26.0'
 L = 47.9'
 P.C. 354 + 23.1
 P.T. 354 + 71.0

P.I. 379 + 57.7
 Δ = 14° 24' Lt.
 R = 300'
 T = 37.9'
 L = 75.4'
 P.C. 379 + 19.8
 P.T. 379 + 95.2

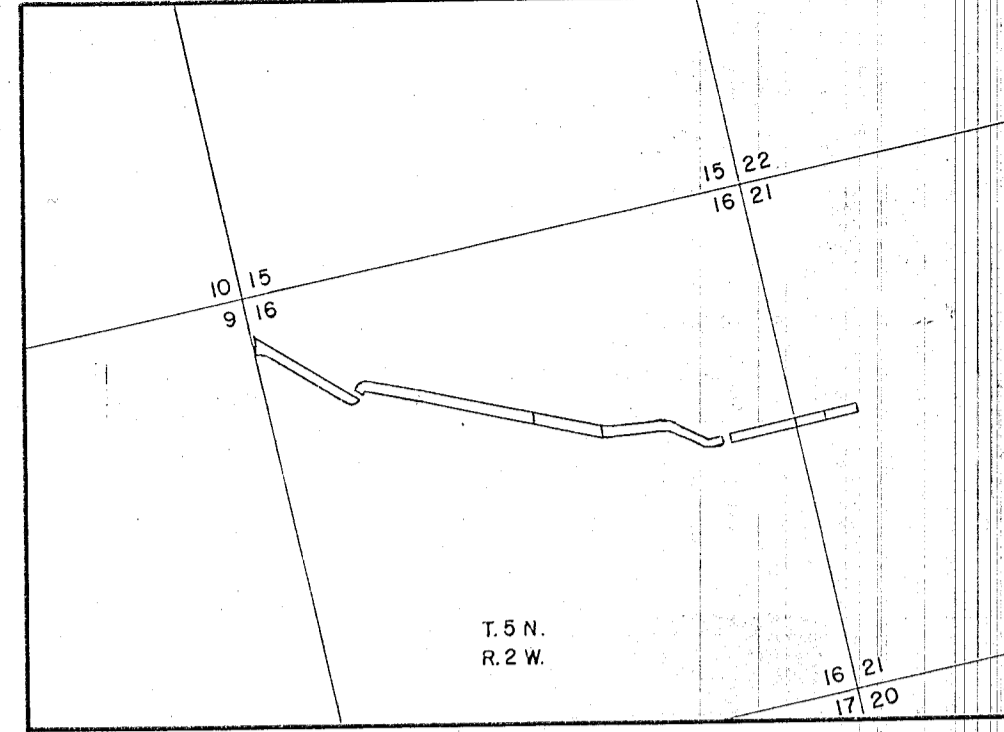
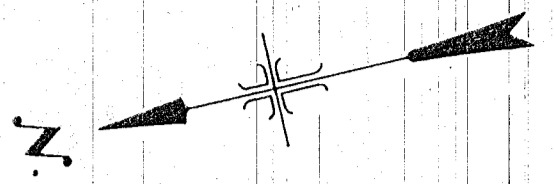
P.I. 366 + 90.2
 Δ = 15° 50' Lt.
 R = 300'
 T = 41.7'
 L = 82.9'
 P.C. 366 + 48.4
 P.T. 367 + 31.3 BK. =
 369 + 70.7 AH.



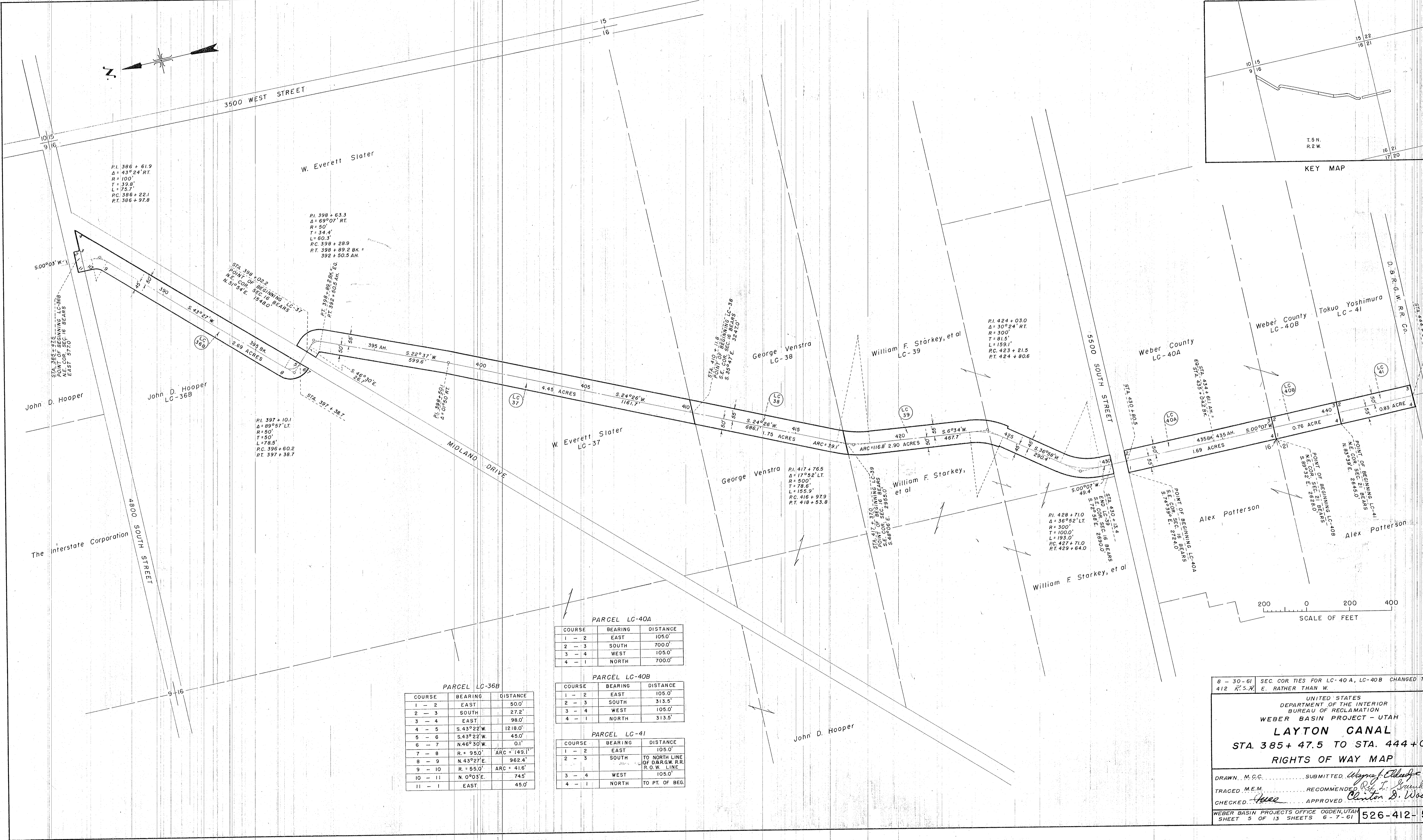
UNITED STATES
 DEPARTMENT OF THE INTERIOR
 BUREAU OF RECLAMATION
 WEBER BASIN PROJECT - UTAH
LAYTON CANAL
 STA. 319+79.8 TO STA. 385+47.5
 RIGHTS OF WAY MAP

DRAWN M.C.C. SUBMITTED *Wm. J. Edwards*
 TRACED R.S.H. RECOMMENDED *R. L. ...*
 CHECKED *...* APPROVED *Clinton D. Woods*

8-27-62 REVISED PARCEL LC-34
 412-412
 WEBER BASIN PROJECTS OFFICE OGDEN, UT. SHEET 4 OF 13 SHEETS 6-6-61 526-412-524



KEY MAP



PI. 386 + 61.9
 $\Delta = 43^\circ 24' RT.$
 $R = 100'$
 $T = 39.8'$
 $L = 75.7'$
 $PC. 386 + 22.1$
 $PT. 386 + 37.0$

W. Everett Slater

PI. 398 + 63.3
 $\Delta = 69^\circ 07' RT.$
 $R = 50'$
 $T = 34.4'$
 $L = 60.3'$
 $PC. 398 + 28.9$
 $RT. 398 + 89.2 BK = 392 + 50.5 AH.$

PI. 424 + 03.0
 $\Delta = 30^\circ 24' RT.$
 $R = 300'$
 $T = 81.5'$
 $L = 159.1'$
 $PC. 423 + 21.5$
 $PT. 424 + 80.6$

PI. 397 + 10.1
 $\Delta = 89^\circ 57' LT.$
 $R = 50'$
 $T = 50'$
 $L = 78.5'$
 $PC. 396 + 60.2$
 $PT. 397 + 38.7$

PI. 417 + 76.5
 $\Delta = 17^\circ 52' LT.$
 $R = 500'$
 $T = 78.6'$
 $L = 155.9'$
 $PC. 416 + 97.9$
 $PT. 418 + 53.8$

PI. 428 + 71.0
 $\Delta = 36^\circ 52' LT.$
 $R = 300'$
 $T = 100.0'$
 $L = 193.0'$
 $PC. 427 + 71.0$
 $PT. 429 + 64.0$

PARCEL LC-40A

COURSE	BEARING	DISTANCE
1 - 2	EAST	105.0'
2 - 3	SOUTH	700.0'
3 - 4	WEST	105.0'
4 - 1	NORTH	700.0'

PARCEL LC-40B

COURSE	BEARING	DISTANCE
1 - 2	EAST	105.0'
2 - 3	SOUTH	313.5'
3 - 4	WEST	105.0'
4 - 1	NORTH	313.5'

PARCEL LC-36B

COURSE	BEARING	DISTANCE
1 - 2	EAST	500.0'
2 - 3	SOUTH	27.2'
3 - 4	EAST	98.0'
4 - 5	S. 43° 22' W.	1218.0'
5 - 6	S. 43° 22' W.	45.0'
6 - 7	N. 46° 30' W.	0.1'
7 - 8	R. = 95.0'	ARC = 149.1'
8 - 9	N. 43° 27' E.	962.4'
9 - 10	R. = 55.0'	ARC = 41.6'
10 - 11	N. 0° 03' E.	74.5'
11 - 1	EAST	45.0'

PARCEL LC-41

COURSE	BEARING	DISTANCE
1 - 2	EAST	105.0'
2 - 3	SOUTH	TO NORTH LINE OF D & R G. W. R.R. R.O.W. LINE
3 - 4	WEST	105.0'
4 - 1	NORTH	TO PT. OF BEG.

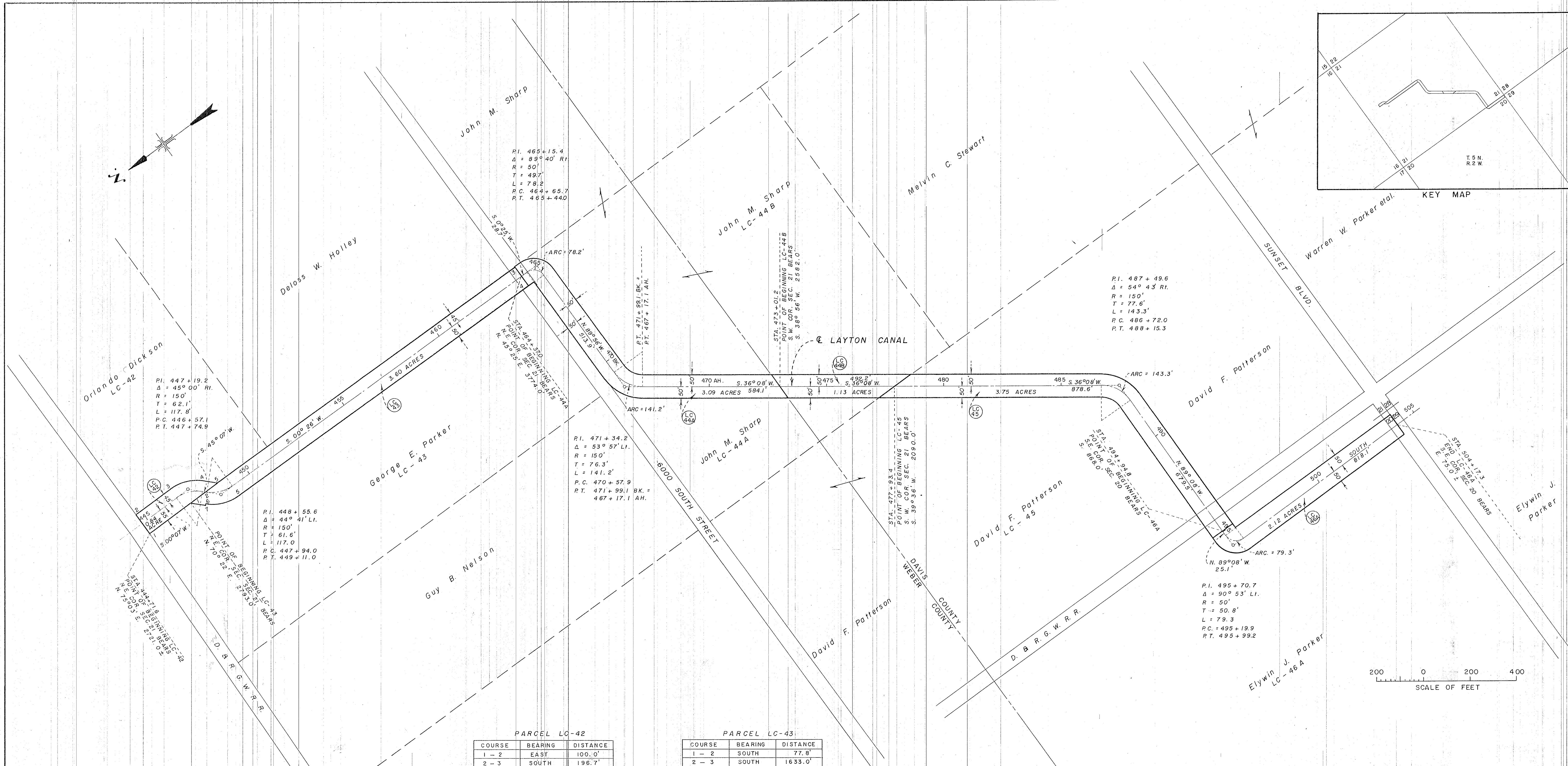
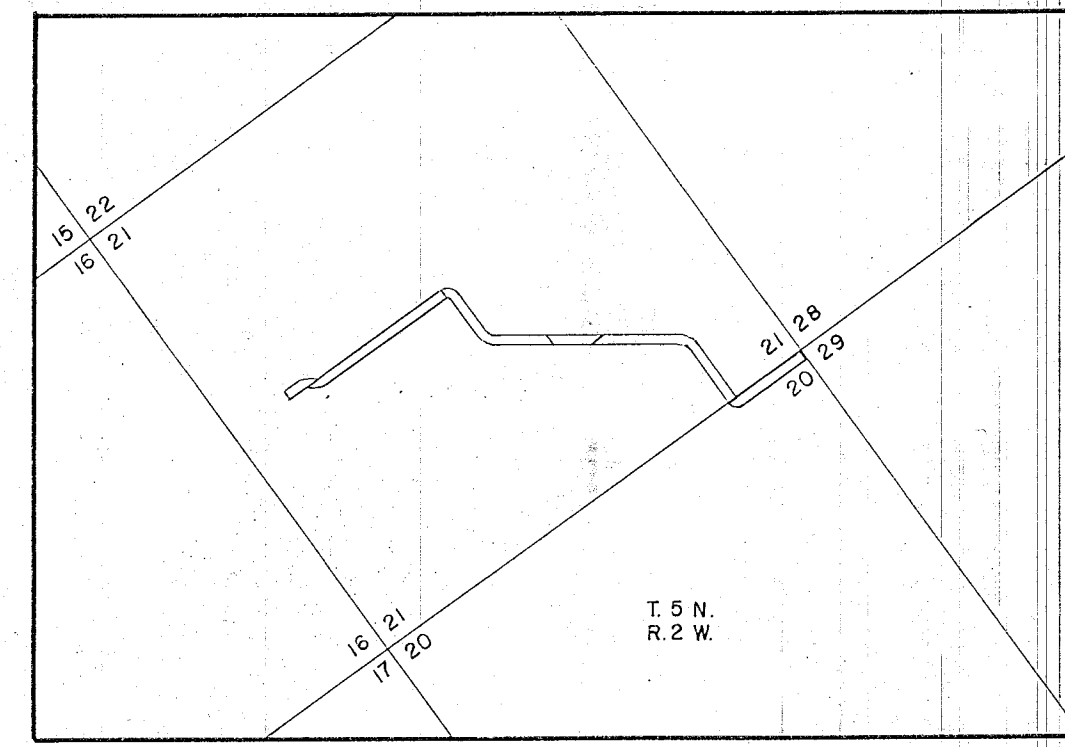
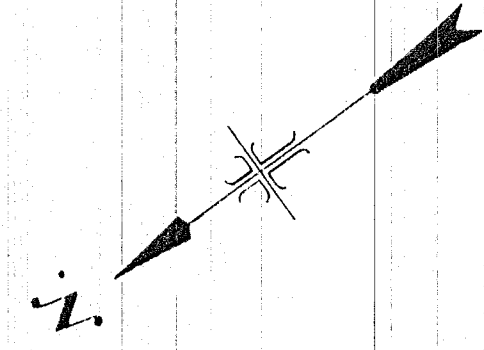
8 - 30 - 61 SEC. COR. TIES FOR LC-40A, LC-40B CHANGED TO 412 R.S.R. E. RATHER THAN W.

UNITED STATES
 DEPARTMENT OF THE INTERIOR
 BUREAU OF RECLAMATION
 WEBER BASIN PROJECT - UTAH

LAYTON CANAL
 STA. 385 + 47.5 TO STA. 444 + 05.5
 RIGHTS OF WAY MAP

DRAWN M.C.C. SUBMITTED *Wayne J. Eldredge*
 TRACED M.E.M. RECOMMENDED *Ray T. Sankha*
 CHECKED *Wesley* APPROVED *Clinton D. Wood*

WEBER BASIN PROJECTS OFFICE OGDEN, UTAH
 SHEET 5 OF 13 SHEETS 6-7-61 526-412-51



Orlando Dickson
LC-42

P.I. 447 + 19.2
Δ = 45° 00' Rl.
R = 150'
T = 62.1'
L = 117.8'
P.C. 446 + 57.1
P.T. 447 + 74.9

P.I. 448 + 55.6
Δ = 44° 41' Ll.
R = 150'
T = 61.6'
L = 117.0'
P.C. 447 + 94.0
P.T. 449 + 11.0

P.I. 465 + 15.4
Δ = 89° 40' Rl.
R = 50'
T = 49.7'
L = 78.2'
P.C. 464 + 65.7
P.T. 465 + 44.0

P.I. 471 + 34.2
Δ = 53° 57' Ll.
R = 150'
T = 76.3'
L = 141.2'
P.C. 470 + 57.9
P.T. 471 + 99.1 BK. =
467 + 17.1 AH.

P.I. 487 + 49.6
Δ = 54° 43' Rl.
R = 150'
T = 77.6'
L = 143.3'
P.C. 486 + 72.0
P.T. 488 + 15.3

P.I. 495 + 70.7
Δ = 90° 53' Ll.
R = 50'
T = 50.8'
L = 79.3'
P.C. 495 + 19.9
P.T. 495 + 99.2

PARCEL LC-42

COURSE	BEARING	DISTANCE
1 - 2	EAST	100.0'
2 - 3	SOUTH	196.7'
3 - 4	R = 195.0'	ARC = 153.2'
4 - 5	S. 45° 07' W.	79.3'
5 - 1	NORTH	358.8'

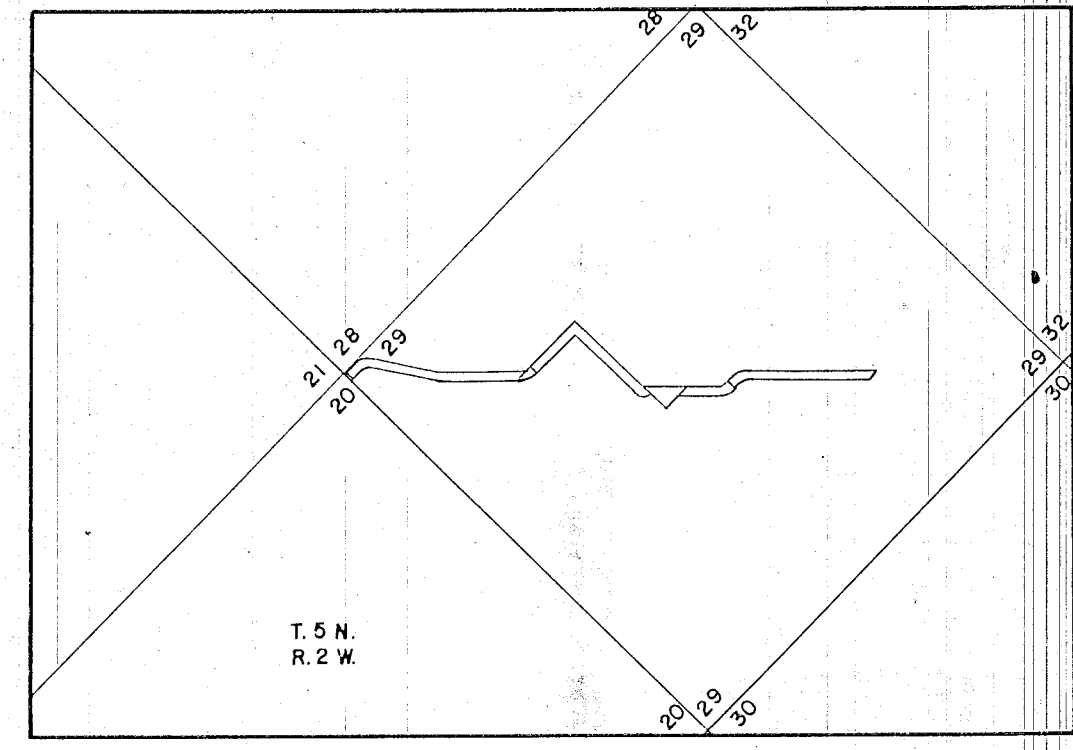
PARCEL LC-43

COURSE	BEARING	DISTANCE
1 - 2	SOUTH	77.8'
2 - 3	SOUTH	1633.0'
3 - 4	WEST	95.0'
4 - 5	NORTH	1526.0'
5 - 6	R = 200.0'	ARC = 155.9'
6 - 7	N. 44° 54' W.	5.0'
7 - 1	N. 45° 06' E.	58.0'

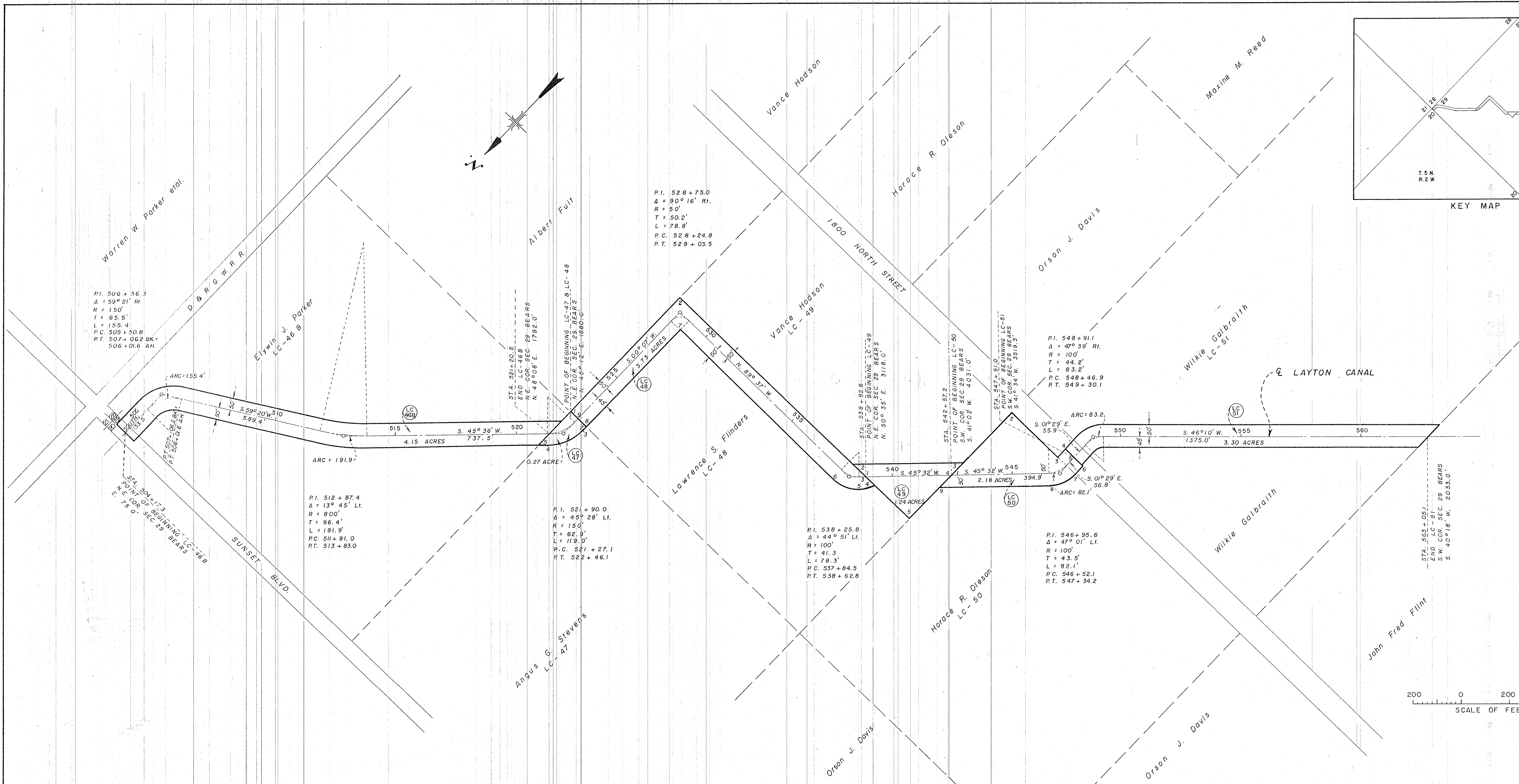
UNITED STATES
DEPARTMENT OF THE INTERIOR
BUREAU OF RECLAMATION
WEBER BASIN PROJECT - UTAH
LAYTON CANAL
STA. 444 + 71.6 TO STA. 504 + 17.3
RIGHTS OF WAY MAP

DRAWN M. C. C. SUBMITTED *Wm. J. Eldredge*
TRACED R. S. H. RECOMMENDED *R. L. Brumbaugh*
CHECKED *W. R. C.* APPROVED *Clinton D. Woods*

WEBER BASIN PROJECTS OFFICE OGDEN, UT.
SHEET 6 OF 13 SHEETS 6-6-61 526-412-5246



KEY MAP



P.I. 506 + 36.3
 $\Delta = 59^\circ 21' \text{ Rt.}$
 $R = 150'$
 $T = 85.5'$
 $L = 155.4'$
 $P.C. 505 + 50.8$
 $P.T. 507 + 06.2 \text{ BK.}$
 $506 + 01.6 \text{ AH.}$

P.I. 528 + 75.0
 $\Delta = 90^\circ 16' \text{ Rt.}$
 $R = 50'$
 $T = 50.2'$
 $L = 78.8'$
 $P.C. 528 + 24.8$
 $P.T. 529 + 03.5$

P.I. 548 + 91.1
 $\Delta = 47^\circ 39' \text{ Rt.}$
 $R = 100'$
 $T = 44.2'$
 $L = 83.2'$
 $P.C. 548 + 46.9$
 $P.T. 549 + 30.1$

P.I. 512 + 87.4
 $\Delta = 13^\circ 45' \text{ Lt.}$
 $R = 800'$
 $T = 96.4'$
 $L = 191.9'$
 $P.C. 511 + 91.0$
 $P.T. 513 + 83.0$

P.I. 521 + 90.0
 $\Delta = 45^\circ 28' \text{ Lt.}$
 $R = 150'$
 $T = 62.9'$
 $L = 119.0'$
 $P.C. 521 + 27.1$
 $P.T. 522 + 46.1$

P.I. 538 + 25.8
 $\Delta = 44^\circ 51' \text{ Lt.}$
 $R = 100'$
 $T = 41.3'$
 $L = 78.3'$
 $P.C. 537 + 84.5$
 $P.T. 538 + 62.8$

P.I. 546 + 95.6
 $\Delta = 47^\circ 01' \text{ Lt.}$
 $R = 100'$
 $T = 43.5'$
 $L = 82.1'$
 $P.C. 546 + 52.1$
 $P.T. 547 + 34.2$

PARCEL LC-47

COURSE	BEARING	DISTANCE
1-2	WEST	95.0'
2-3	N. 00° 07' E.	17.4'
3-4	R = 195°	ARC = 119.0'
4-5	N. 45° 35' E.	51.8'
5-1	SOUTH	192.7'

PARCEL LC-48

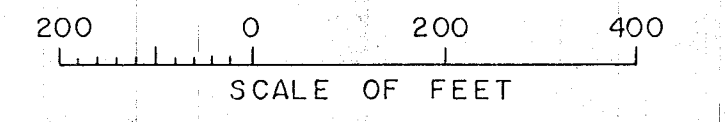
COURSE	BEARING	DISTANCE
1-2	SOUTH	662.0'
2-3	WEST	1095.0'
3-4	WEST	50.1'
4-5	N. 45° 32' E.	81.0'
5-6	R = 150°	ARC = 117.5'
6-7	S. 89° 37' E.	886.0'
7-8	N. 0° 07' E.	561.3'
8-9	EAST	45.0'
9-1	EAST	50.0'

PARCEL LC-49

COURSE	BEARING	DISTANCE
1-2	S. 89° 48' E.	71.1'
2-3	S. 45° 32' W.	464.2'
3-4	N. 0° 12' E.	70.3'
4-5	N. 0° 12' E.	256.0'
5-1	S. 89° 48' E.	259.0'

PARCEL LC-50

COURSE	BEARING	DISTANCE
1-2	SOUTH	357.0'
2-3	WEST	261.5'
3-4	S. 1° 29' E.	50.2'
4-5	WEST	50.0'
5-6	WEST	50.0'
6-7	N. 1° 29' W.	55.5'
7-8	R = 150°	ARC = 123.2'
8-9	N. 45° 32' E.	44.4.0'
9-1	SOUTH	70.1'

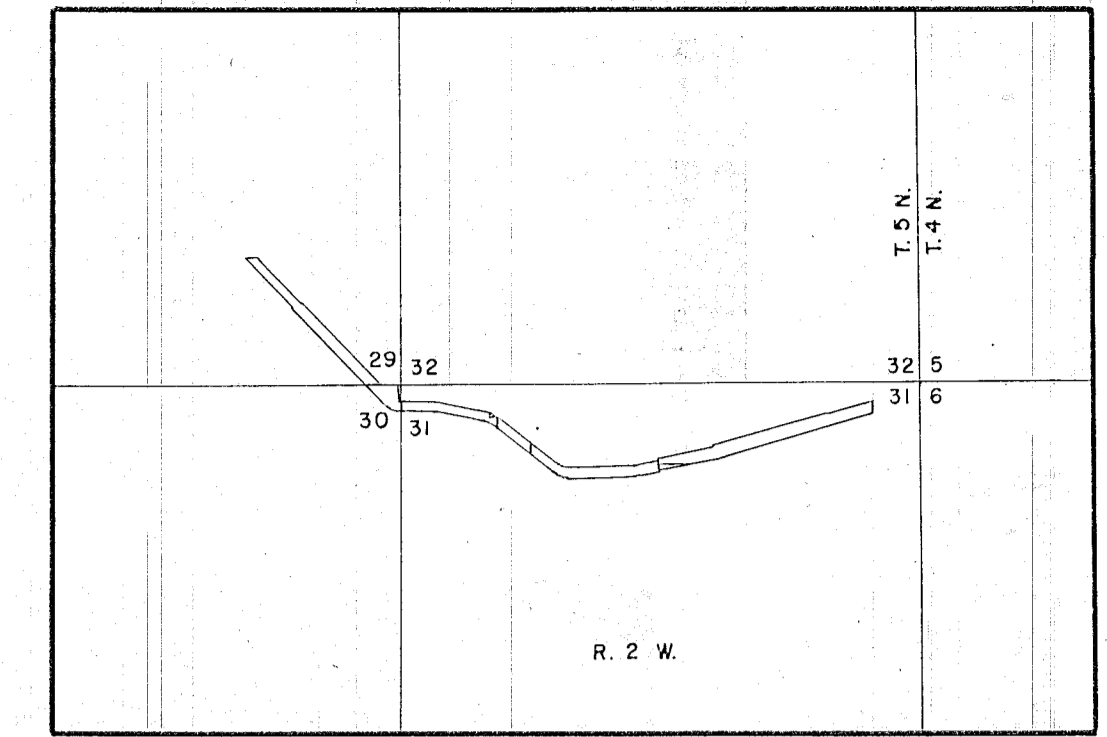


UNITED STATES
 DEPARTMENT OF THE INTERIOR
 BUREAU OF RECLAMATION
 WEBER BASIN PROJECT-UTAH
LAYTON CANAL
 STA. 504+17.3 TO STA. 563+05.1
 RIGHTS OF WAY MAP

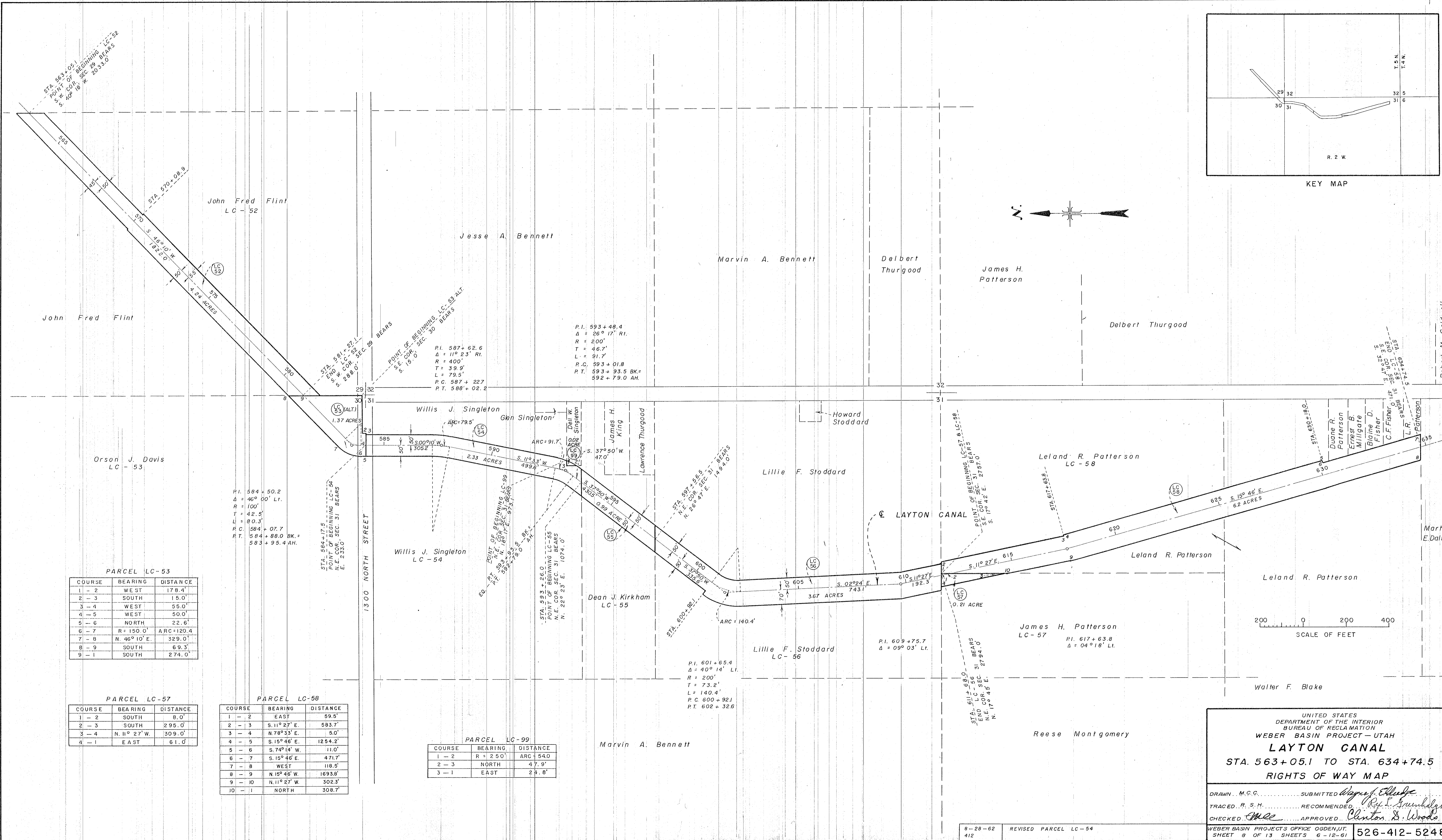
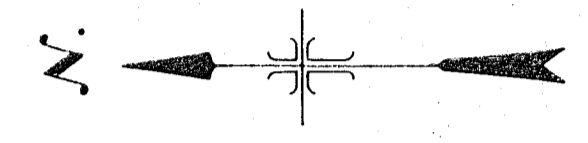
DRAWN M. C. C. SUBMITTED *Walter J. Edinger*
 TRACED R. S. H. RECOMMENDED *Paul L. Greenhalgh*
 CHECKED *W.C.C.* APPROVED *Clinton D. Woods*

8-28-62 REVISED PARCEL LC-50
 412
 10-26-61 REVISED ARC DISTANCE IN LC-48 FROM 78.3' TO 117.5'
 412 *W.C.C.* ADDED WIDTH DIMENSIONS PARCEL LC-48

WEBER BASIN PROJECTS OFFICE OGDEN, UT
 SHEET 7 OF 13 SHEETS 6-8-61 **526-412-5247**



KEY MAP



PARCEL LC-53

COURSE	BEARING	DISTANCE
1 - 2	WEST	178.4'
2 - 3	SOUTH	15.0'
3 - 4	WEST	55.0'
4 - 5	WEST	50.0'
5 - 6	NORTH	22.6'
6 - 7	R = 150.0'	ARC = 120.4'
7 - 8	N. 46° 10' E.	329.0'
8 - 9	SOUTH	69.3'
9 - 1	SOUTH	274.0'

PARCEL LC-57

COURSE	BEARING	DISTANCE
1 - 2	SOUTH	8.0'
2 - 3	SOUTH	295.0'
3 - 4	N. 11° 27' W.	309.0'
4 - 1	EAST	61.0'

PARCEL LC-58

COURSE	BEARING	DISTANCE
1 - 2	EAST	59.5'
2 - 3	S. 11° 27' E.	583.7'
3 - 4	N. 78° 33' E.	5.0'
4 - 5	S. 15° 46' E.	1254.2'
5 - 6	S. 74° 14' W.	110.0'
6 - 7	S. 15° 46' E.	471.7'
7 - 8	WEST	118.5'
8 - 9	N. 15° 46' W.	1693.8'
9 - 10	N. 11° 27' W.	302.3'
10 - 1	NORTH	308.7'

PARCEL LC-99

COURSE	BEARING	DISTANCE
1 - 2	R = 250'	ARC = 54.0'
2 - 3	NORTH	47.9'
3 - 1	EAST	25.8'

P.I. 584 + 50.2
 $\Delta = 46^\circ 00' \text{ Lt.}$
 $R = 100'$
 $T = 42.5'$
 $L = 80.3'$
 P.C. 584 + 07.7
 P.T. 584 + 88.0 BK. =
 583 + 95.4 AH.

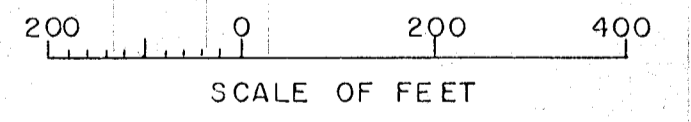
P.I. 587 + 62.6
 $\Delta = 11^\circ 23' \text{ Rt.}$
 $R = 400'$
 $T = 39.9'$
 $L = 79.3'$
 P.C. 587 + 227
 P.T. 588 + 02.2

P.I. 593 + 48.4
 $\Delta = 26^\circ 17' \text{ Rt.}$
 $R = 200'$
 $T = 46.7'$
 $L = 91.7'$
 P.C. 593 + 01.8
 P.T. 593 + 93.5 BK. =
 592 + 79.0 AH.

P.I. 601 + 65.4
 $\Delta = 40^\circ 14' \text{ Lt.}$
 $R = 200'$
 $T = 73.2'$
 $L = 140.4'$
 P.C. 600 + 921
 P.T. 602 + 32.8

P.I. 609 + 75.7
 $\Delta = 09^\circ 03' \text{ Lt.}$

P.I. 617 + 63.8
 $\Delta = 04^\circ 18' \text{ Lt.}$



UNITED STATES
 DEPARTMENT OF THE INTERIOR
 BUREAU OF RECLAMATION
 WEBER BASIN PROJECT - UTAH
LAYTON CANAL
 STA. 563+05.1 TO STA. 634+74.5
 RIGHTS OF WAY MAP

DRAWN: M.C.C. SUBMITTED: *Walter F. Blake*
 TRACED: R. S.H. RECOMMENDED: *Walter F. Blake*
 CHECKED: *W.F.B.* APPROVED: *Clinton S. Woods*
 WEBER BASIN PROJECTS OFFICE OGDEN, UT. SHEET 8 OF 13 SHEETS 6-12-61

8-28-62 412 REVISED PARCEL LC-54

526-412-5248

PARCEL LC-59		
COURSE	BEARING	DISTANCE
1-2	EAST	3.0'
2-3	EAST	46.8'
3-4	S. 15° 46' E.	72.7'
4-5	WEST	69.5'
5-1	NORTH	70.0'

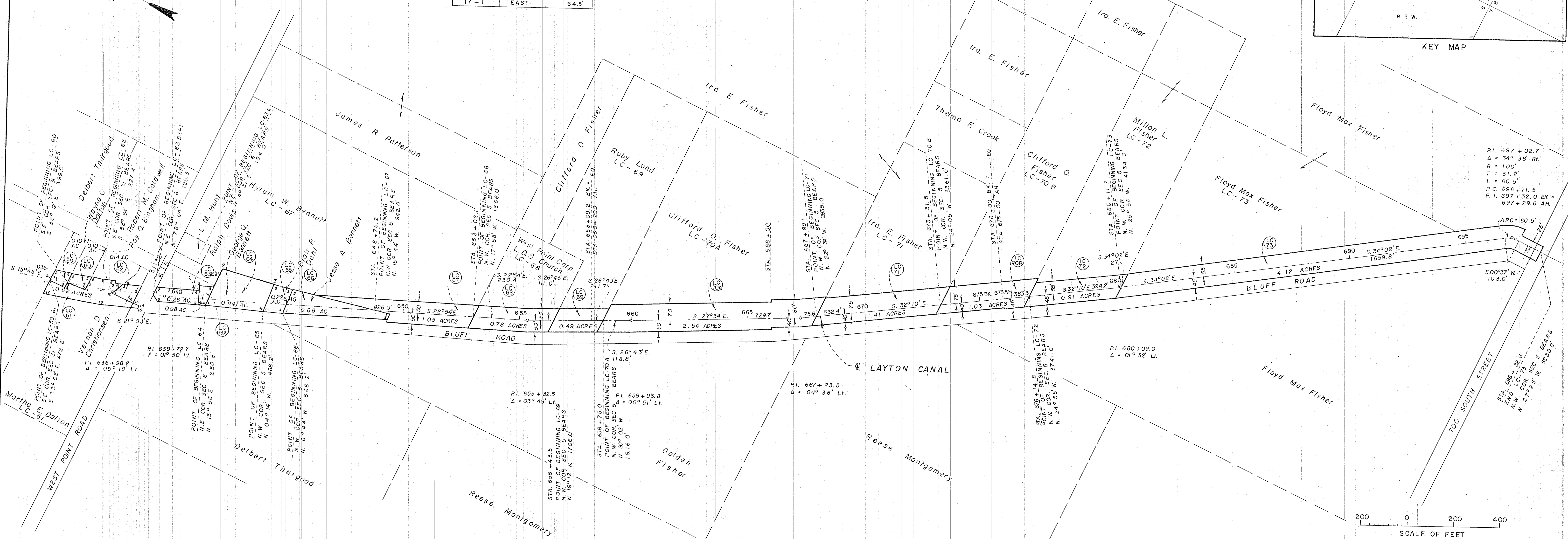
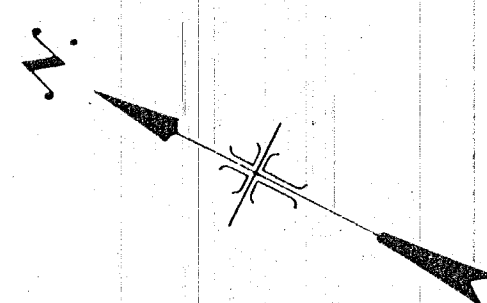
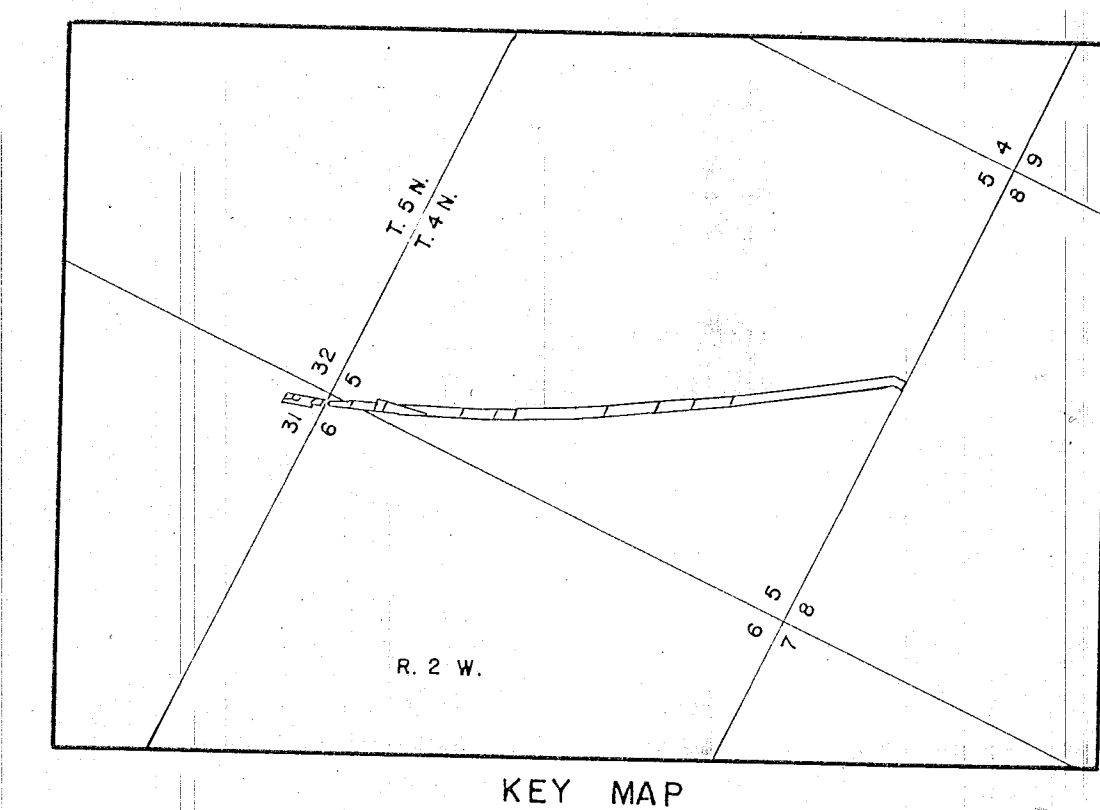
PARCEL LC-60		
COURSE	BEARING	DISTANCE
1-2	EAST	41.5'
2-3	S. 15° 46' E.	88.3'
3-4	WEST	46.8'
4-5	WEST	18.7'
5-1	NORTH	85.0'

PARCEL LC-61		
COURSE	BEARING	DISTANCE
1-2	SOUTH	70.0'
2-3	EAST	28.0'
3-4	SOUTH	85.0'
4-5	EAST	18.7'
5-6	EAST	46.8'
6-7	S. 15° 46' E.	48.0'
7-8	S. 21° 04' E.	57.9'
8-9	S. 68° 56' W.	15.0'
9-10	S. 21° 02' E.	26.5'
10-11	N. 72° 30' W.	38.4'
11-12	N. 72° 30' W.	117.3'
12-13	S. 01° 53' E.	100.6'
13-14	S. 00° 03' W.	29.5'
14-15	WEST	11.7'
15-16	N. 21° 04' W.	171.5'
16-17	N. 15° 46' W.	246.7'
17-1	EAST	64.5'

PARCEL LC-62		
COURSE	BEARING	DISTANCE
1-2	S. 72° 30' E.	17.3'
2-3	S. 72° 30' E.	38.4'
3-4	S. 21° 04' E.	88.4'
4-5	S. 89° 06' W.	32.0'
5-6	WEST	49.6'
6-1	N. 01° 53' W.	100.6'

PARCEL LC-63B(P)		
COURSE	BEARING	DISTANCE
1-2	N. 89° 18' E.	38.0'
2-3	S. 21° 04' E.	42.4'
3-4	S. 22° 54' E.	139.3'
4-5	S. 67° 06' W.	60.6'
5-6	N. 22° 16' W.	179.1'
6-1	N. 33° 01' E.	30.2'

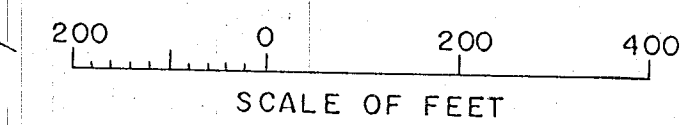
PARCEL LC-63A		
COURSE	BEARING	DISTANCE
1-2	N. 67° 06' E.	20.0'
2-3	S. 22° 54' E.	60.0'
3-4	S. 87° 22' W.	88.0'
4-5	N. 22° 16' W.	28.5'
5-1	N. 67° 06' E.	60.6'



PARCEL LC-64		
COURSE	BEARING	DISTANCE
1-2	N. 87° 22' E.	172.1'
2-3	S. 11° 44' E.	247.4'
3-4	S. 85° 49' W.	126.2'
4-1	N. 21° 36' W.	261.9'

PARCEL LC-65		
COURSE	BEARING	DISTANCE
1-2	N. 85° 49' E.	126.2'
2-3	S. 11° 44' E.	80.0'
3-4	S. 85° 49' W.	111.8'
4-1	N. 21° 36' W.	83.1'

PARCEL LC-66		
COURSE	BEARING	DISTANCE
1-2	N. 85° 49' E.	111.8'
2-3	S. 12° 23' E.	430.0'
3-4	S. 85° 49' W.	27.0'
4-1	N. 23° 08' W.	450.0'

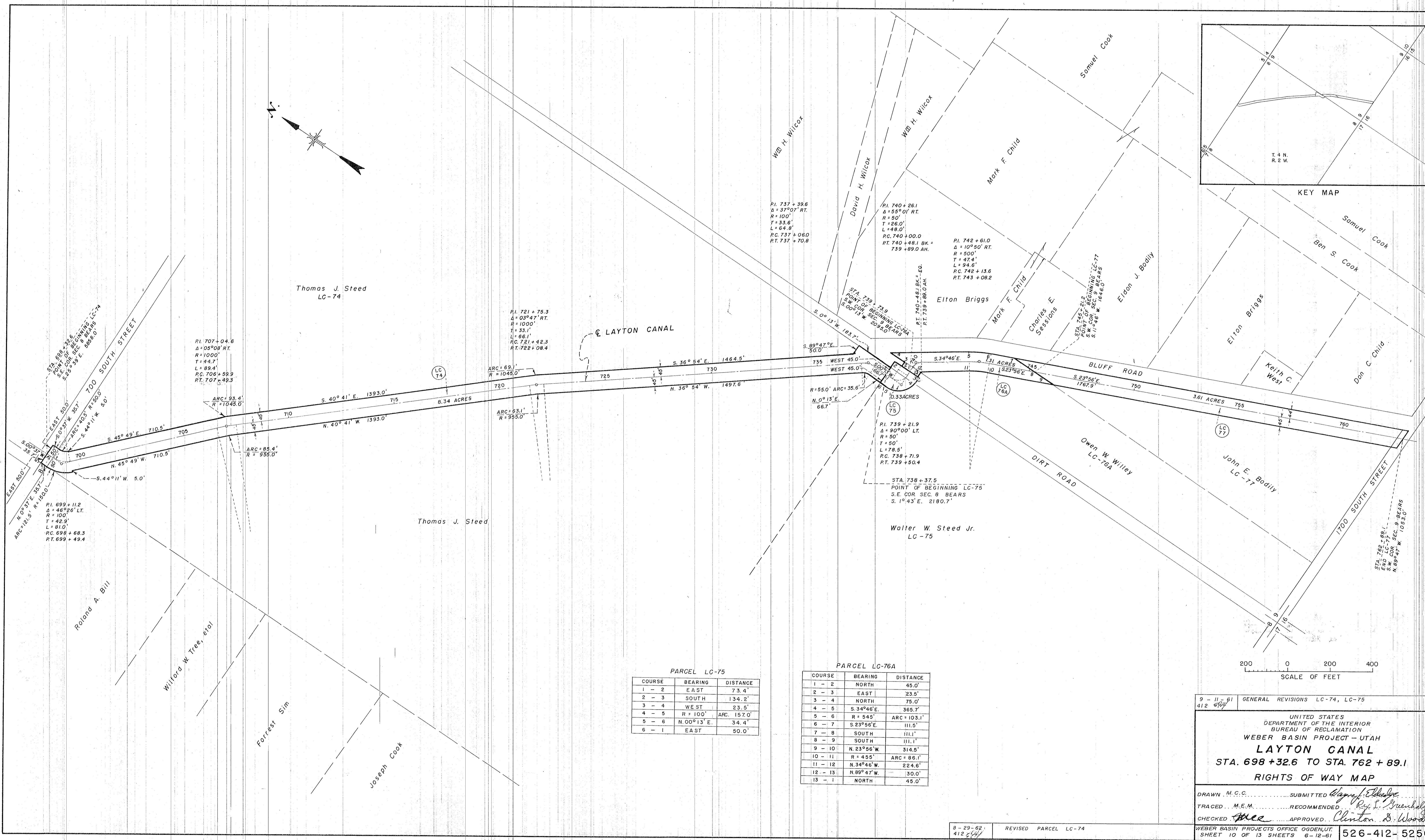
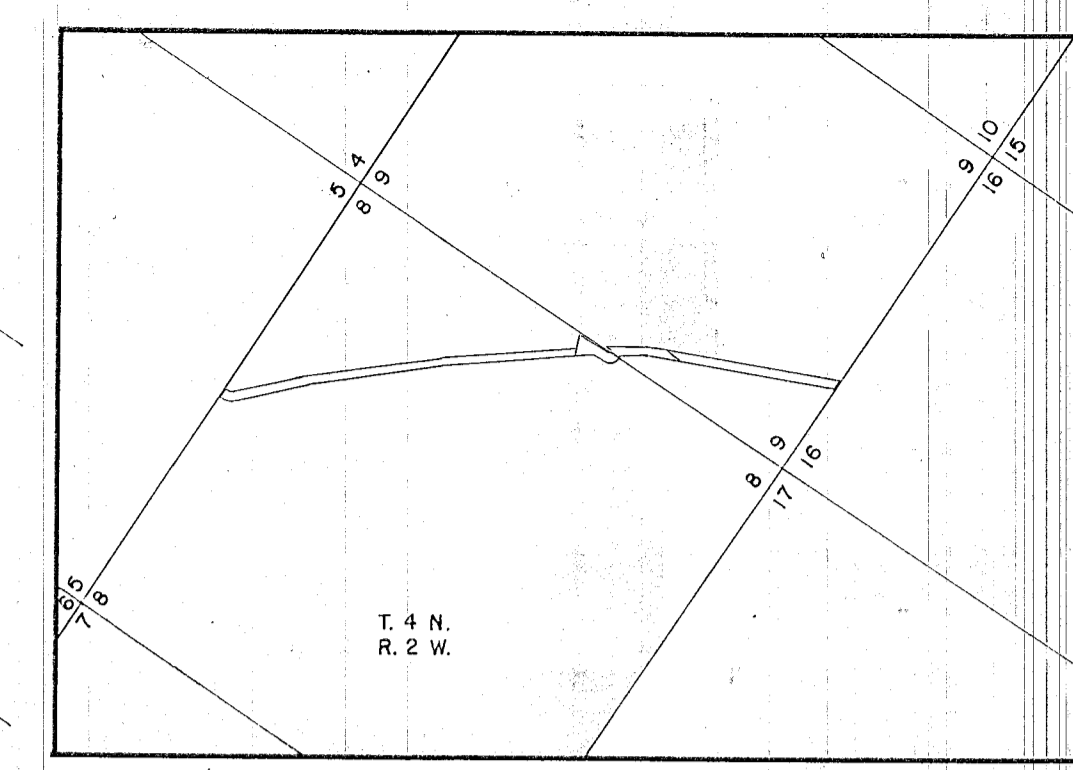
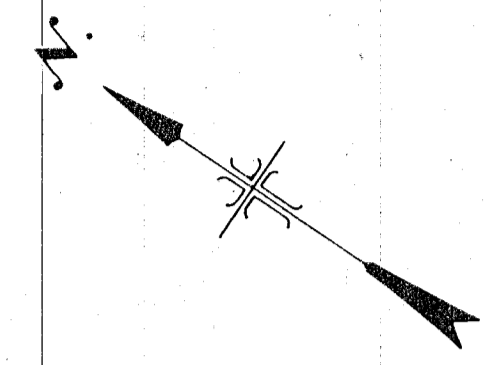


8-28-62	R.O.W. REVISED; PARCEL 60, 64, 68 AND 73
412	
10-3-61	R.O.W. REVISED STA. 634+74.5 TO STA. 642+00.0
412	
7-28-61	R.O.W. REVISED P.T. 697+29.6 AH TO STA. 698+32.6
412	

UNITED STATES
DEPARTMENT OF THE INTERIOR
BUREAU OF RECLAMATION
WEBER BASIN PROJECT - UTAH
LAYTON CANAL
STA. 634 + 74.5 TO STA. 698 + 32.6
RIGHTS OF WAY MAP

DRAWN M.C.C. SUBMITTED *Wm. J. Ellinger*
TRACED R.S.H. RECOMMENDED *R. L. Schmalzer*
CHECKED *Free* APPROVED *Clinton D. Woods*

WEBER BASIN PROJECTS OFFICE OGDEN, UT.
SHEET 9 OF 13 SHEETS 6-12-61 526-412-5249

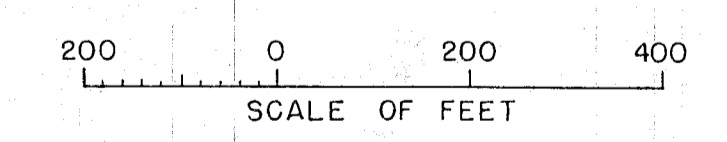


PARCEL LC-75

COURSE	BEARING	DISTANCE
1 - 2	EAST	73.4'
2 - 3	SOUTH	134.2'
3 - 4	WEST	23.5'
4 - 5	R = 100' ARC = 157.0'	
5 - 6	N. 00° 13' E.	34.4'
6 - 1	EAST	50.0'

PARCEL LC-76A

COURSE	BEARING	DISTANCE
1 - 2	NORTH	45.0'
2 - 3	EAST	23.5'
3 - 4	NORTH	75.0'
4 - 5	S. 34° 46' E.	365.7'
5 - 6	R = 545' ARC = 103.1'	
6 - 7	S. 23° 56' E.	111.5'
7 - 8	SOUTH	111.1'
8 - 9	SOUTH	111.1'
9 - 10	N. 23° 56' W.	314.5'
10 - 11	R = 455' ARC = 86.1'	
11 - 12	N. 34° 46' W.	224.6'
12 - 13	N. 89° 47' W.	30.0'
13 - 1	NORTH	45.0'



9 - 11 - 61
412

GENERAL REVISIONS LC-74, LC-75

UNITED STATES
DEPARTMENT OF THE INTERIOR
BUREAU OF RECLAMATION
WEBER BASIN PROJECT - UTAH
LAYTON CANAL
STA. 698+32.6 TO STA. 762+89.1
RIGHTS OF WAY MAP

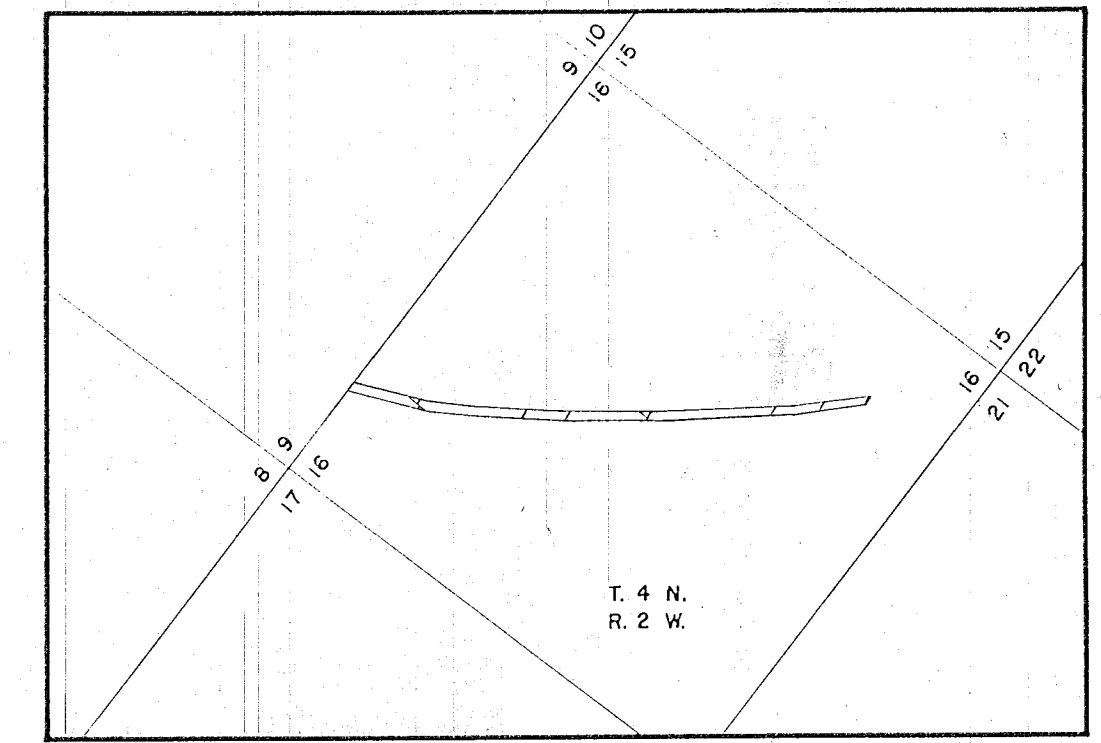
DRAWN M.C.C. SUBMITTED *Wm. J. Ellender*
TRACED M.E.M. RECOMMENDED *Reg. J. Greenhalgh*
CHECKED *W.C.* APPROVED *Clinton S. Woods*

WEBER BASIN PROJECTS OFFICE OGDEN, UT. SHEET 10 OF 13 SHEETS 6-12-61

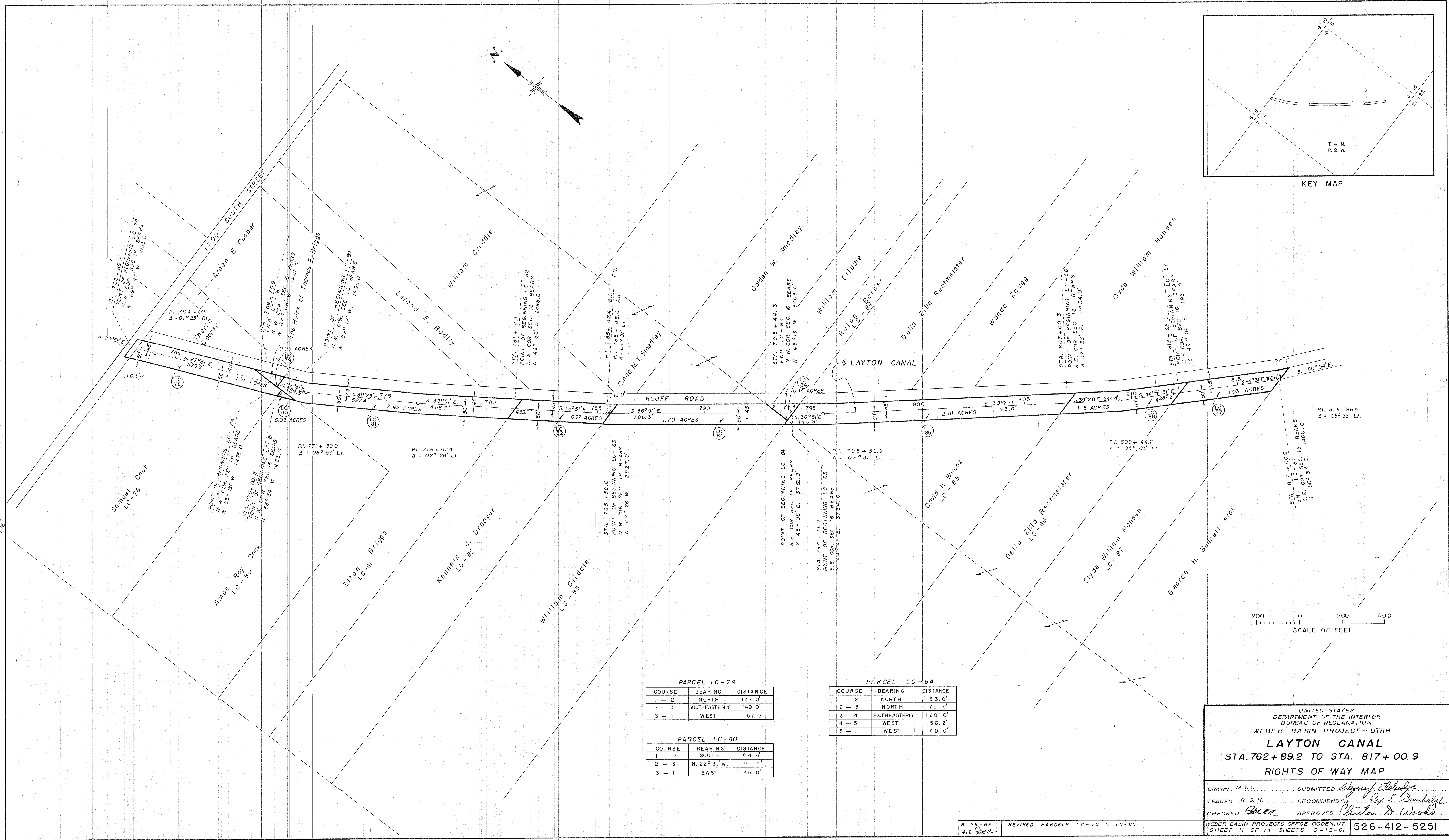
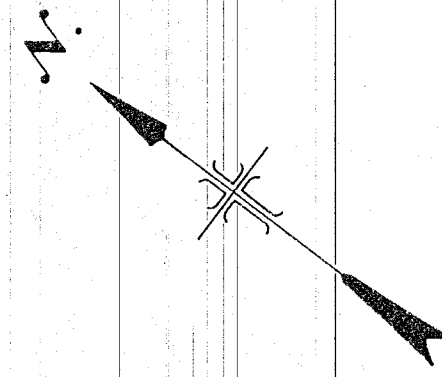
526-412-5250

8-29-62
412

REVISED PARCEL LC-74



KEY MAP



PARCEL LC-79

COURSE	BEARING	DISTANCE
1 - 2	NORTH	137.0'
2 - 3	SOUTHEASTERLY	149.0'
3 - 1	WEST	57.0'

PARCEL LC-80

COURSE	BEARING	DISTANCE
1 - 2	SOUTH	64.4'
2 - 3	N. 22° 31' W.	91.4'
3 - 1	EAST	35.0'

PARCEL LC-84

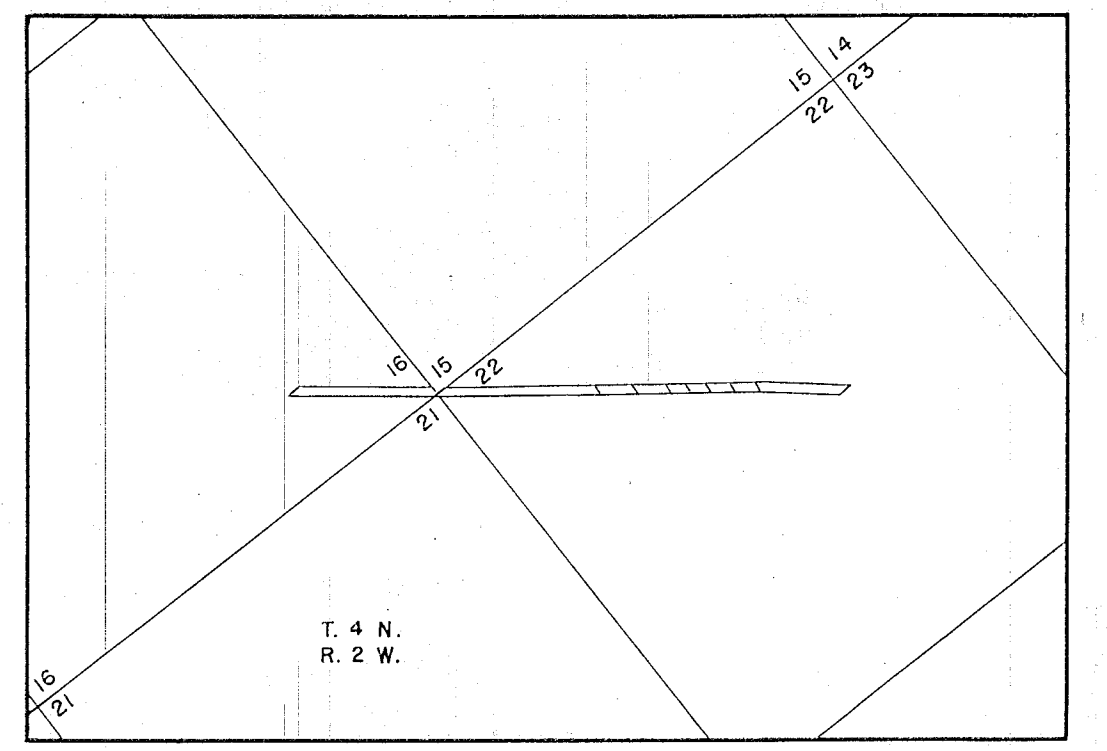
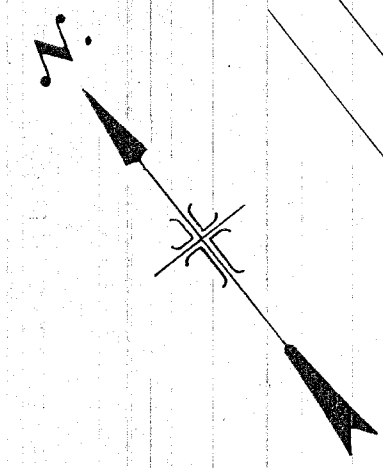
COURSE	BEARING	DISTANCE
1 - 2	NORTH	53.0'
2 - 3	NORTH	75.0'
3 - 4	SOUTHEASTERLY	160.0'
4 - 5	WEST	56.2'
5 - 1	WEST	40.0'

UNITED STATES
DEPARTMENT OF THE INTERIOR
BUREAU OF RECLAMATION
WEBER BASIN PROJECT - UTAH
LAYTON CANAL
STA. 762+89.2 TO STA. 817+00.9
RIGHTS OF WAY MAP

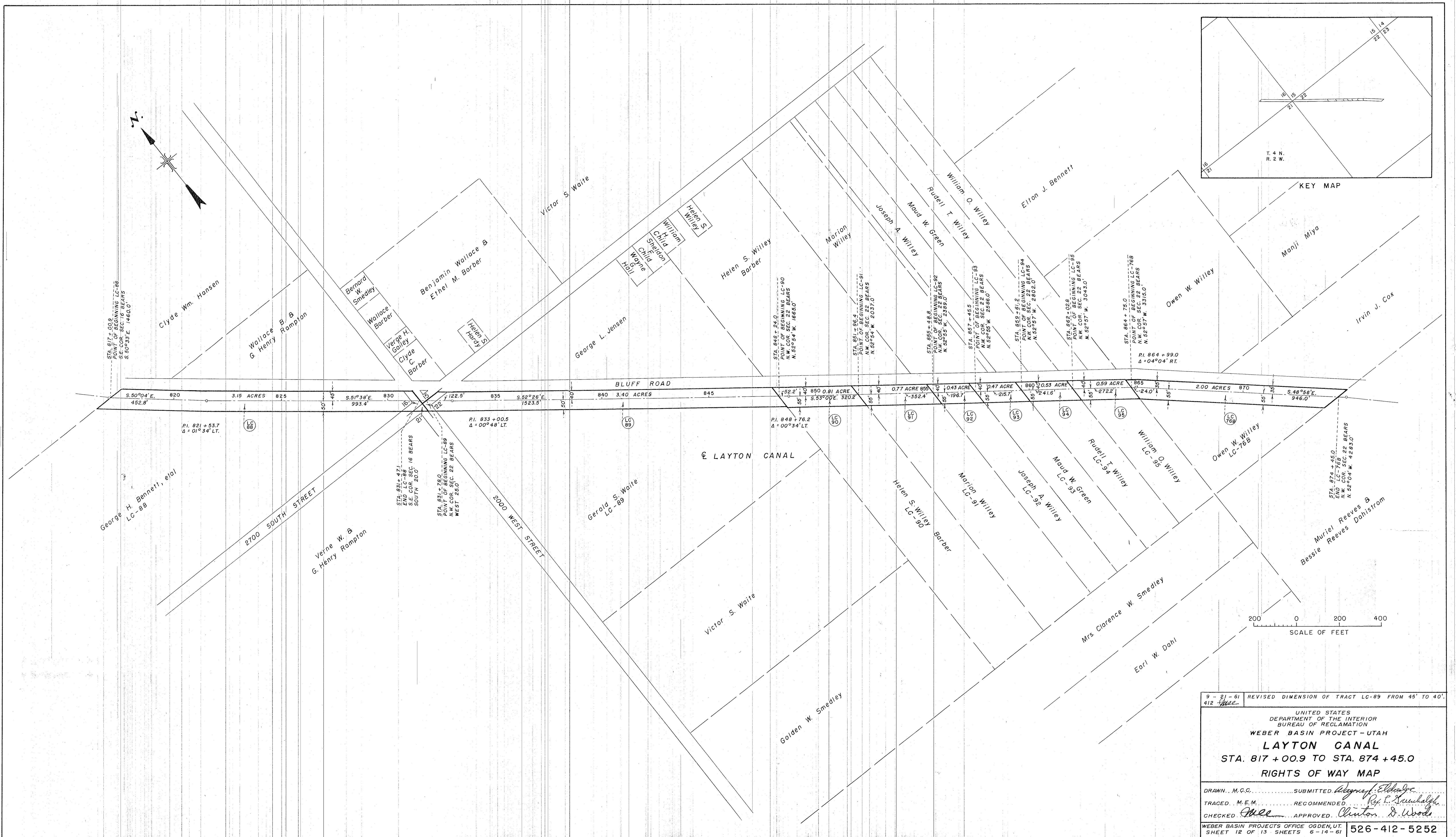
DRAWN M.C.C. SUBMITTED *Wm. F. Elledge*
TRACED R.S.H. RECOMMENDED *Ray L. Brunkhals*
CHECKED *W.C.C.* APPROVED *Clinton D. Woods*

8-29-62 412 *W.C.C.* REVISED PARCELS LC-79 & LC-80

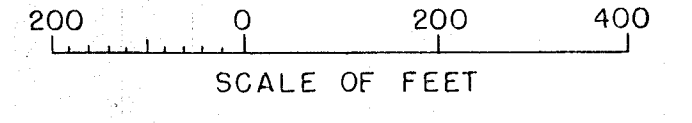
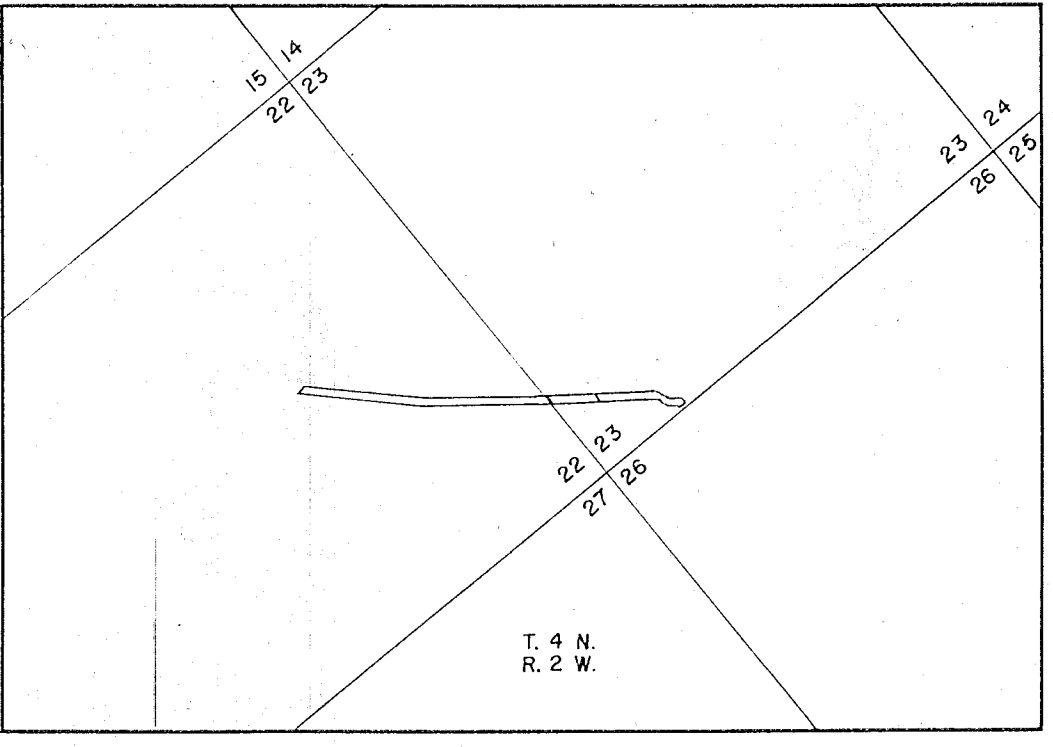
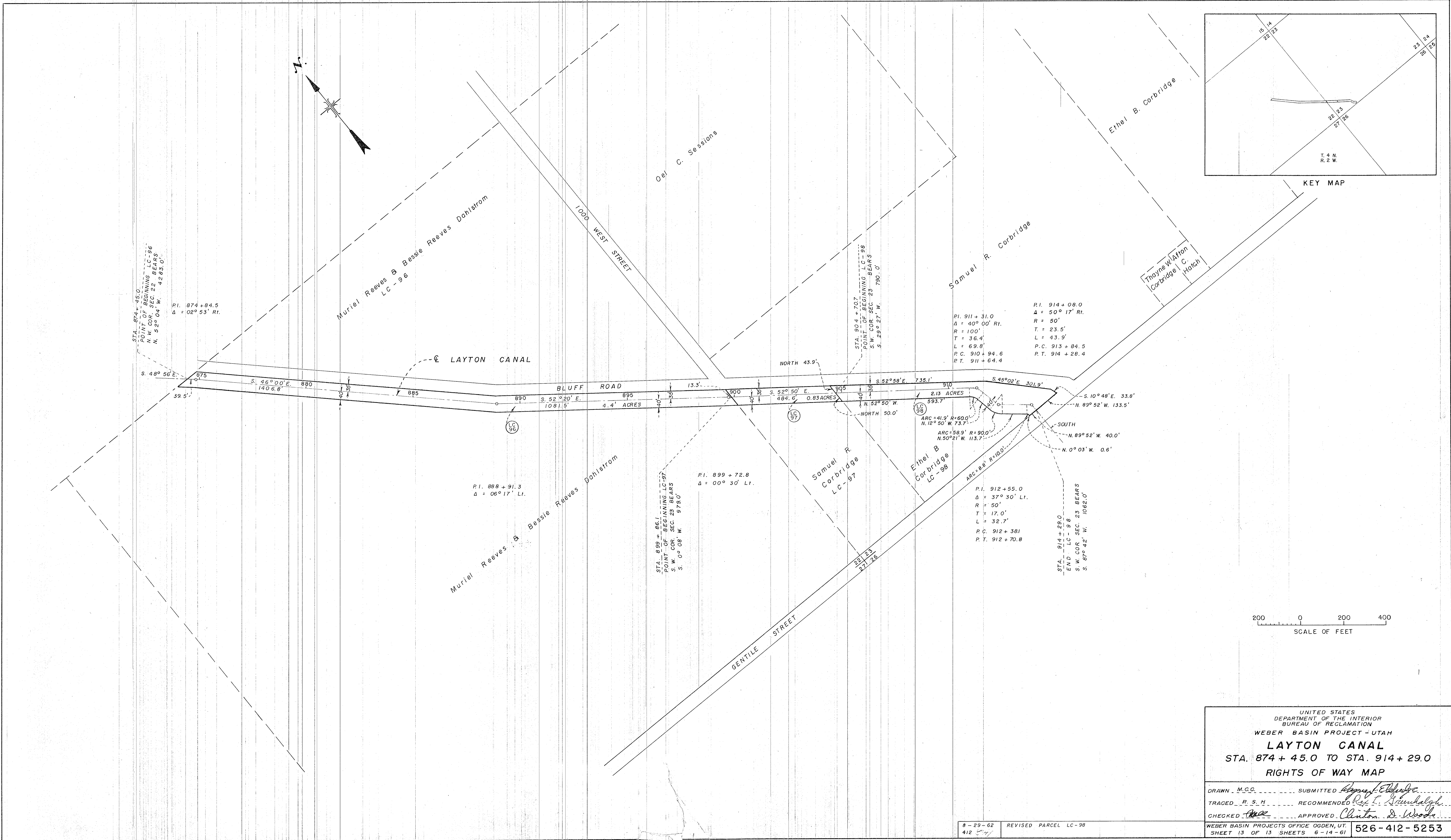
WEBER BASIN PROJECTS OFFICE OGDEN, UT. SHEET 11 OF 13 SHEETS 6-12-61 526-412-5251



KEY MAP



9-21-61 412 base	REVISED DIMENSION OF TRACT LC-89 FROM 45' TO 40'.
UNITED STATES DEPARTMENT OF THE INTERIOR BUREAU OF RECLAMATION WEBER BASIN PROJECT - UTAH LAYTON CANAL STA. 817 + 00.9 TO STA. 874 + 45.0 RIGHTS OF WAY MAP	
DRAWN . M.C.C.	SUBMITTED <i>Edgar J. ...</i>
TRACED . M.E.M.	RECOMMENDED <i>R. T. ...</i>
CHECKED <i>W.C.C.</i>	APPROVED <i>Clinton D. Wood</i>
WEBER BASIN PROJECTS OFFICE OGDEN, UT. SHEET 12 OF 13 SHEETS 6-14-61	
526-412-5252	



UNITED STATES DEPARTMENT OF THE INTERIOR BUREAU OF RECLAMATION WEBER BASIN PROJECT - UTAH LAYTON CANAL STA. 874 + 45.0 TO STA. 914 + 29.0 RIGHTS OF WAY MAP	
DRAWN M.C.C.	SUBMITTED <i>[Signature]</i>
TRACED R.S.H.	RECOMMENDED <i>[Signature]</i>
CHECKED <i>[Signature]</i>	APPROVED <i>[Signature]</i>
8-29-62 412	REVISED PARCEL LC-98 WEBER BASIN PROJECTS OFFICE OGDEN, UT. SHEET 13 OF 13 SHEETS 6-14-61 526-412-5253